

INCATI

Innovative Carpet Tiles



COLLECTION
2021



ABOUT INCATI

INCATI stands for Innovative Carpet Tiles.

We design, manufacture and service high quality modular flooring solutions for global commercial customers in the office, hospitality, education and healthcare sectors.

INCATI was created by Tapibel nv, a Belgian manufacturer of high-quality needlefelt and tufted floor covering, and has been in the carpet business for over 50 years now.

As a family owned business, we strive for excellence in product quality, customer relationships and providing an all-inclusive service throughout your project with us.

Get inspired by INCATI!



COMPANY VALUES

INCATI's main focus is to develop and manufacture innovative carpet tiles that are durable, functional and sustainable.

Our knowledge about raw materials and new production technologies allows us to continuously invest in product improvement, while following ethical and environmental practices.

WHY CARPET TILES

- Create your own unique floor space; mix different styles and colours or textures
- Choose standard size 50 x 50cm or go wild on different shapes, the layout options are endless
- Carpet tiles offer greater underfoot comfort, wear-resistance, acoustic performance, safety and improved air quality
- Modular flooring is easier to transport, store, install, maintain and replace
- Tiles have a waste factor of only 5% compared to average 15% for wall-to-wall carpet
- ECONYL® regenerated nylon is the perfect answer to specifying sustainable flooring solutions

ENDLESS SUSTAINABLE POSSIBILITIES

TO EXPLORE A NEW WORLD OF INFINITE REGENERATION

INCATI is proud to announce that a large percentage of the Myriad-made collections is manufactured from **100% sustainable ECONYL® BCF yarn**. Another important measure to decrease our environmental impact. ECONYL® yarn is a **100% regenerated and regenerable fibre made from pre- and post-consumer Nylon 6 waste** materials such as industrial plastic components, fishing nets, fabric scraps and used carpets.

RECOVERED MATERIALS

These materials are recovered all over the world and undergo an **extensive depolymerization process** to create 100% regenerated ECONYL® Nylon yarn used for production of superior quality carpet tiles. ECONYL® is exactly the same as virgin nylon but the process behind tells a completely different story: it is a regenerated yarn with **sustainable characteristics** that offers similar mechanical and technical performances as standard nylon 6.

THE FUTURE IS A CIRCULAR ECONOMY

In order to make way for sustainable development, we must change our product lifecycles. INCATI believes a **circular economy** is the future: producing goods in a **sustainable way**, by **limiting the consumption and waste of resources** such as raw materials. Not only can we reduce waste and the emission of greenhouse gases, but we can also decrease our dependence on the importation of raw materials.



**INCATI DOES ITS FAIR SHARE
FOR THE ENVIRONMENT**

INCATI values the environment. We make an ongoing commitment to decrease the impact of our activities on the planet to the best of our ability.

These are some of the steps we have taken to reduce our carbon footprint:



We recycle the waste of raw materials unused during the production process



2500 solar panels generate 500 mW/year which represents 35% of our total electricity consumption



Used carpet tiles are converted to secondary fuel, effectively reducing overall CO₂ emissions



All Nylon yarn from the INCATI tiles can be recycled



THE ECONYL® REGENERATION SYSTEM

ECONYL® regenerated nylon can be recycled infinitely, without ever losing its quality.



1.

Rescuing, sorting and cleaning of waste like fishing nets, fabric scraps, carpet flooring and industrial plastic that would otherwise pollute the Earth all over the world.



2.

Regeneration and purification process: the nylon waste is recycled right back to its original purity.



3.

Regeneration into carpet yarn and textile yarn for the fashion and interior industries.

**FOR EVERY 10,000 TONS OF ECONYL®
RAW MATERIAL, AQUAFIL IS ABLE TO:**

Save

70,000

barrels

of crude oil

Avoid

65,100

tonnes

of CO₂ eq. emissions

As well as being a solution on waste, ECONYL® regenerated nylon is also better when it comes to climate change. It reduces the global warming impact of nylon by up to 80% compared with the material from oil.

GLOBAL WARMING POTENTIAL

Co₂ EQ.
Emissions
Virgin
Yarn



Co₂ EQ.
Emissions
ECONYL®
Yarn



Tufted **polyamide top cloth** on a **polyester fleece primary backing** with a **precoat** finish for improved fibre bond

Bitumen with **glass fibre scrim secondary backing**, to assure dimensional stability and improve laying properties

500gr **SOUNDBLOC** polyester felt backing, to increase acoustic performance, durability and underfoot comfort

SOUNDBLOC CARPET TILES FOR IMPROVED ROOM ACOUSTICS

INCATI CARPET TILES REDUCE SOUND

As a textile, carpet is a natural sound absorber and reduces impact noise while absorbing sound within the space. All our qualities have sound absorbing properties and reduce impact noise. Several collections even reach the α_w 0,35 threshold, reducing sound up to 50%.

THE IMPORTANCE OF SOUND REDUCTION

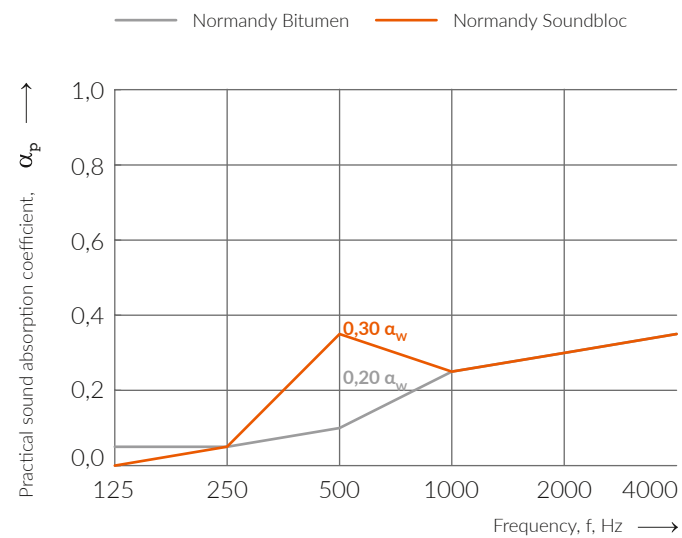
Sound is an important aspect in many buildings. Office environments, hotels, schools and educational facilities, hospitals, nursing homes and healthcare infrastructure, in all these environments, bad acoustics and intrusive sounds can damage the functionality of the environment.

Modern office workplaces should support work optimally and provide a positive ambiance to the employees, furthermore, they should encourage staff motivation and the power of concentration. Flexible office structures combined with communicative room structures meet these demands best. Create a productive environment by **improving room acoustics** with our **sound-absorbing polyester felt tiles**. Add an **extra layer of comfort** under working feet and transform offices into pleasant working spaces.

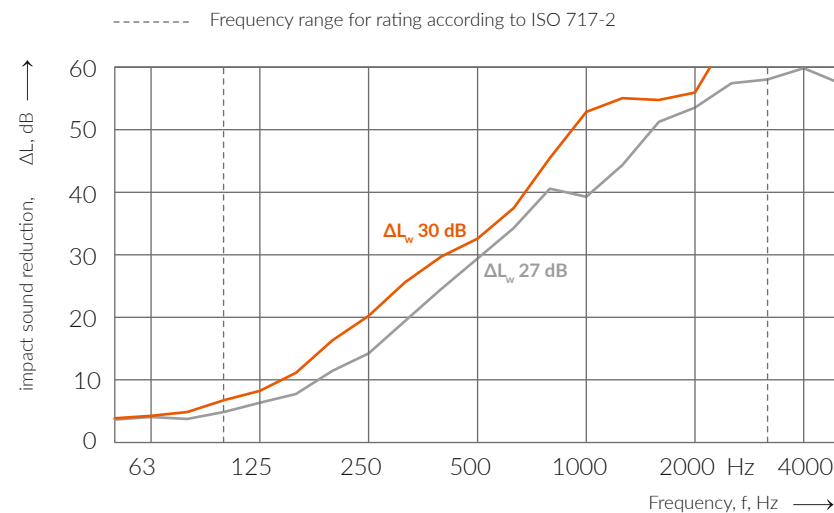


A study of the VDI (Assocation of German Engineers) puts the losses of performance due to noise and visual disturbances at 20 – 30%. Sound absorbing carpet tiles can reduce the losses of performance.

SOUND ABSORPTION



IMPACT SOUND INSULATION



A MYRIAD OF CARPET TILE DESIGNS

MYRIAD INDIVIDUAL PILE DELIVERY (IPD)

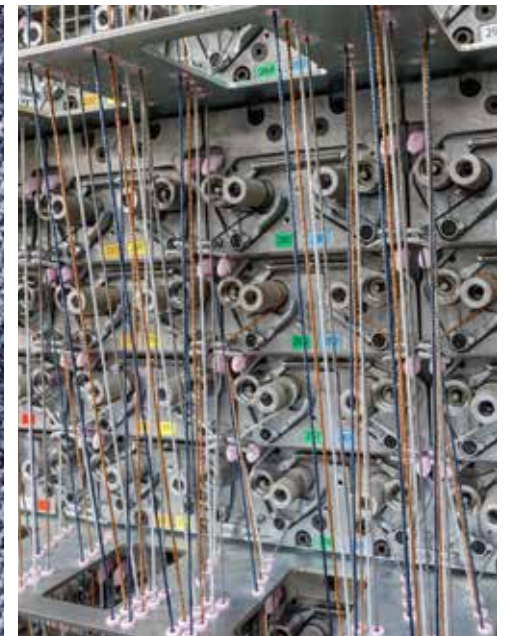
INCATI's state-of-the-art **Myriad tufting machine** - developed and built by the market leading **Cobble Vandewiele** - with its amazing **individual pile delivery** (IPD) technology, brings **unlimited design flexibility** with full pattern repeat definition to any carpet tile specification.

This **high speed** tufting machine holds hundreds of compact servomotors that control each individually the yarn ends, to achieve an endless number of pile heights.

Automated visual control systems - such as on board high resolution cameras and laserstop - create a **sophisticated quality control system** for ultimate piece of mind.

GO THE EXTRA MILE

INCATI is led by working with high-tech hardware, multiple colour palettes or yarn textures, and inspiring design styles. Additionally we have the **benefit** of offering **both modular and wall-to-wall** (4 metre wide) **flooring solutions** within one and the same collection.



MIX AND MATCH

Today's working environments or hospitality interiors feature more than just one design or colour style. Interior designers prefer a more **sophisticated** and **creative carpet look** that can be combined with hard flooring specifications. A **unique signature** to each of their projects.

At INCATI we emphasize the importance of this **modular flooring trend**. For projects **exceeding 200m²**, **special tile sizes** are made available in both bitumen or soundblock backing :



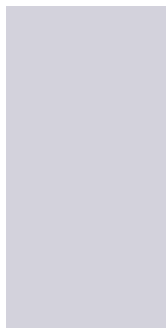
25*100



50*100

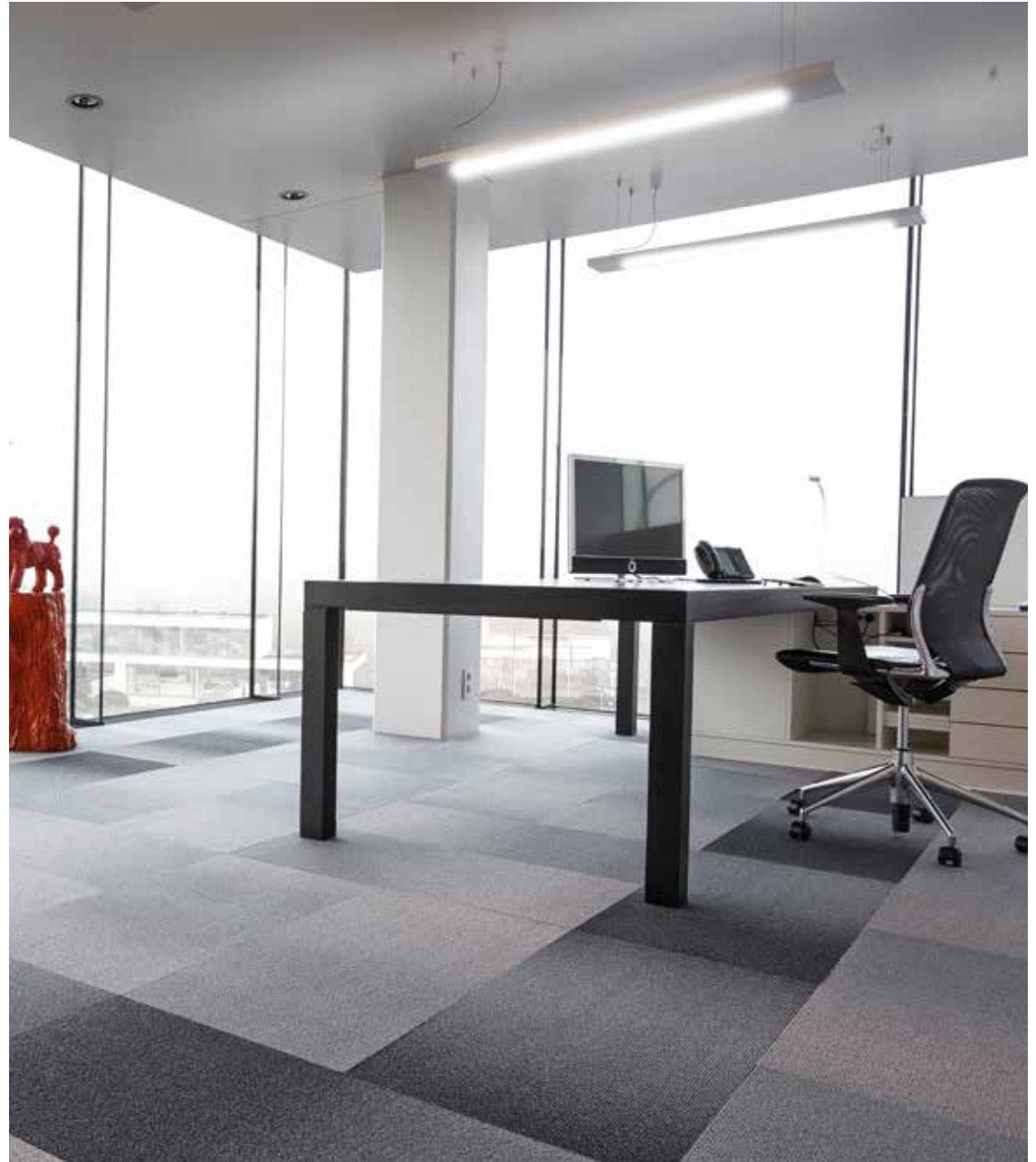


100*100



100*200

Custom made tile/plank orders may result in an overproduction of about 10%, which is mandatory to purchase. Keep this in mind when you calculate and budget your project work.



INSTALLATION GUIDELINES

PRIOR INSTALLATION

- The area of installation must be clean, fully enclosed, weather tight and heated to a minimum temperature of 18°C
- Check humidity level of +/- 60% RH (hygrometer test)
- Carefully check the packaging label on each box ; use tiles from the same batch in a room or larger open areas
- Allow tiles and adhesive materials to acclimatise in the room of installation, for at least 24 hours
- Provide a stabilised, dry, clean, greaseproof, sturdy, and even (sub)floor
- The subfloor temperature must be 10°C to 25°C, and humidity may not exceed 5% (concrete protimeter test)
- Switch off the underfloor heating system at least 24 hours before carpet tiles are installed

INSTALLATION

- Plan the installation work carefully ; are all measurements correct and did you calculate waste accurately ?
- Always start from the centre point of a room, or as near as possible
- It is highly recommended to install tiles over a tackifier adhesive , applied according to the adhesive manufacturer's recommendation
- Allow tackifier to dry (min. 30 minutes) to a clear tacky film, because wet tackifier will result in a permanent bond

RAISED FLOORS

- Most panels are manufactured 600 x 600 mm, manufacturers recommend the installation of 500 x 500 mm carpet tiles which overlap panel joints and stops unwanted air circulation
- Upon special request, INCATI is able to custom make 600 x 600 mm tiles
- Either size of carpet tile can be installed over a raised access flooring system using a recommended tackifier
- Ensure that the tackifier in its wet state does not enter the joins between panels

PILE DIRECTION

- Check for the arrow on the backside
- Always ensure that tiles are laid in the recommended direction ; monolithic appearance for cut pile qualities, loop pile qualities have more options (monolithic/ checkerboard/brick/ashlar)
- You will find these recommendations on the INCATI technical data sheets

FLOOR PROTECTION

- Make sure that the finished floor is sufficiently protected (by film) if the room will be used by other workers



MAINTENANCE GUIDELINES

All INCATI carpet tile products require correct maintenance to optimise wear life, performance and appearance retention.

PREVENTIVE MEASURES

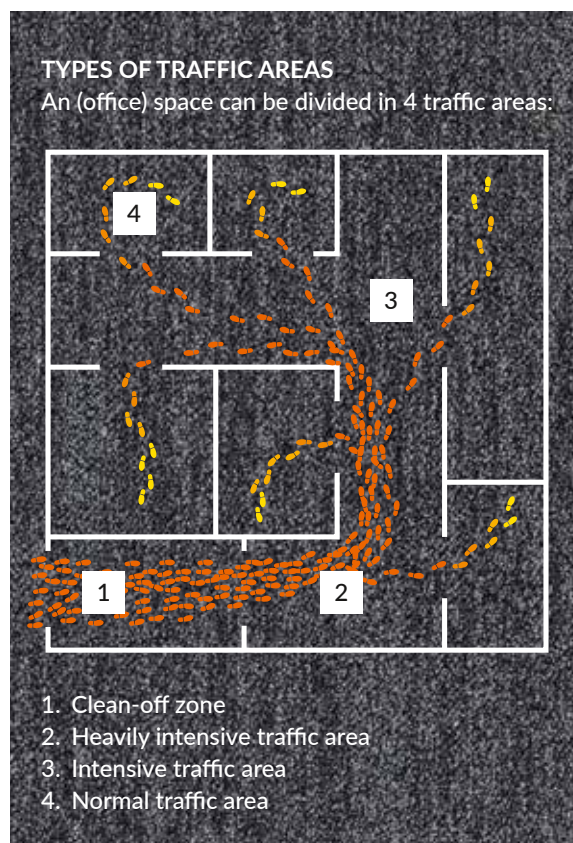
- Right choice of quality and colour in relation to type of room and location
- Protection of any floor covering starts with an optimal protection of the entrance area(s) : use entrance mats and foresee efficient and sufficiently long clean-off zone(s)
- The use of chair mats is recommended under castor chairs

ROUTINE CLEANING

- A good vacuuming programme is essential to successful carpet maintenance ; this removes soil and helps to lift / restore the pile of the carpet.
- Recommended machines : SEBO AUTOMATIC XP or DART 2
- Quick and correct spot removal will ease the cleaning process significantly
- Carefully follow the instructions mentioned on the cleaning products, use pH neutral solutions

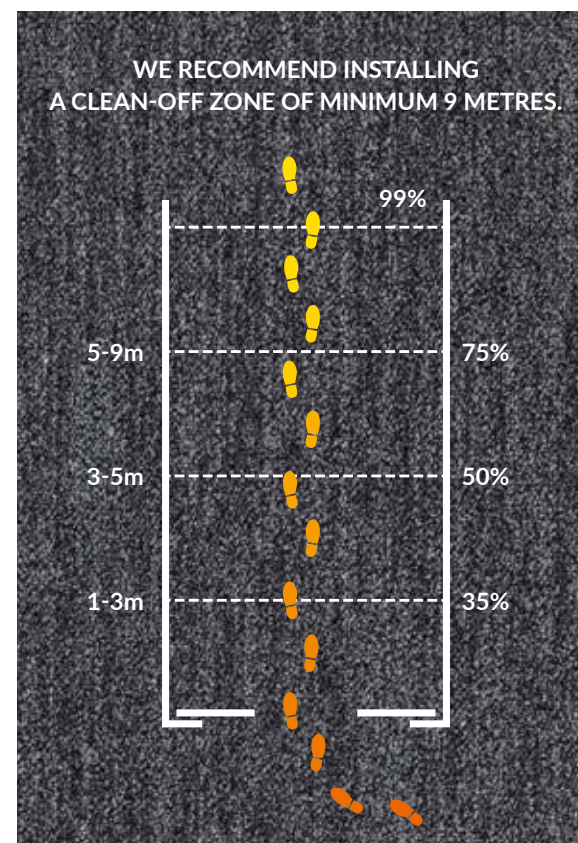
GENERAL SPOT CLEANING INSTRUCTIONS

View recommendations support by JAMES.EU



SPECIALISED MAINTENANCE

View our maintenance brochure for detailed guidelines



ALTUM VELVET



#elegance #comfort #durability

STYLE
VELOURS

COMPOSITION
100% PA - ECONYL®

PILE WEIGHT
1.000 G/M²

TOTAL THICKNESS
8,0 MM

RATINGS
CL 33 – BFL-S1



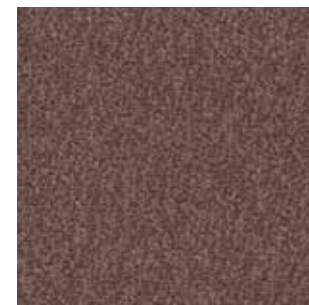
ALTUM VELVET
602_80

ALTUM VELVET
602_60

14



602_20



602_23



602_60



602_61



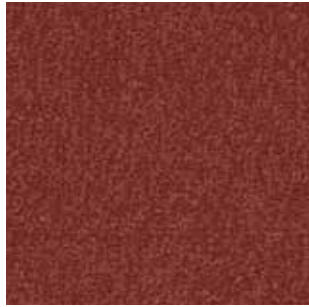
602_80



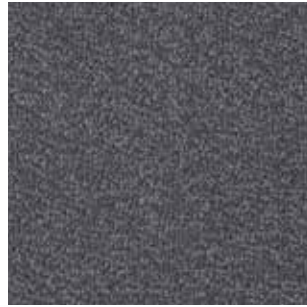
602_89



602_30



602_38



602_40



602_42



602_50



602_64



602_65



602_70

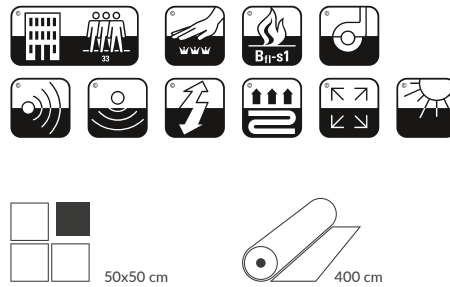


602_75



602_76

EN 14041
CE
17
DOP 000602T-001
EN1307
For use as textile
floorcovering in buildings.

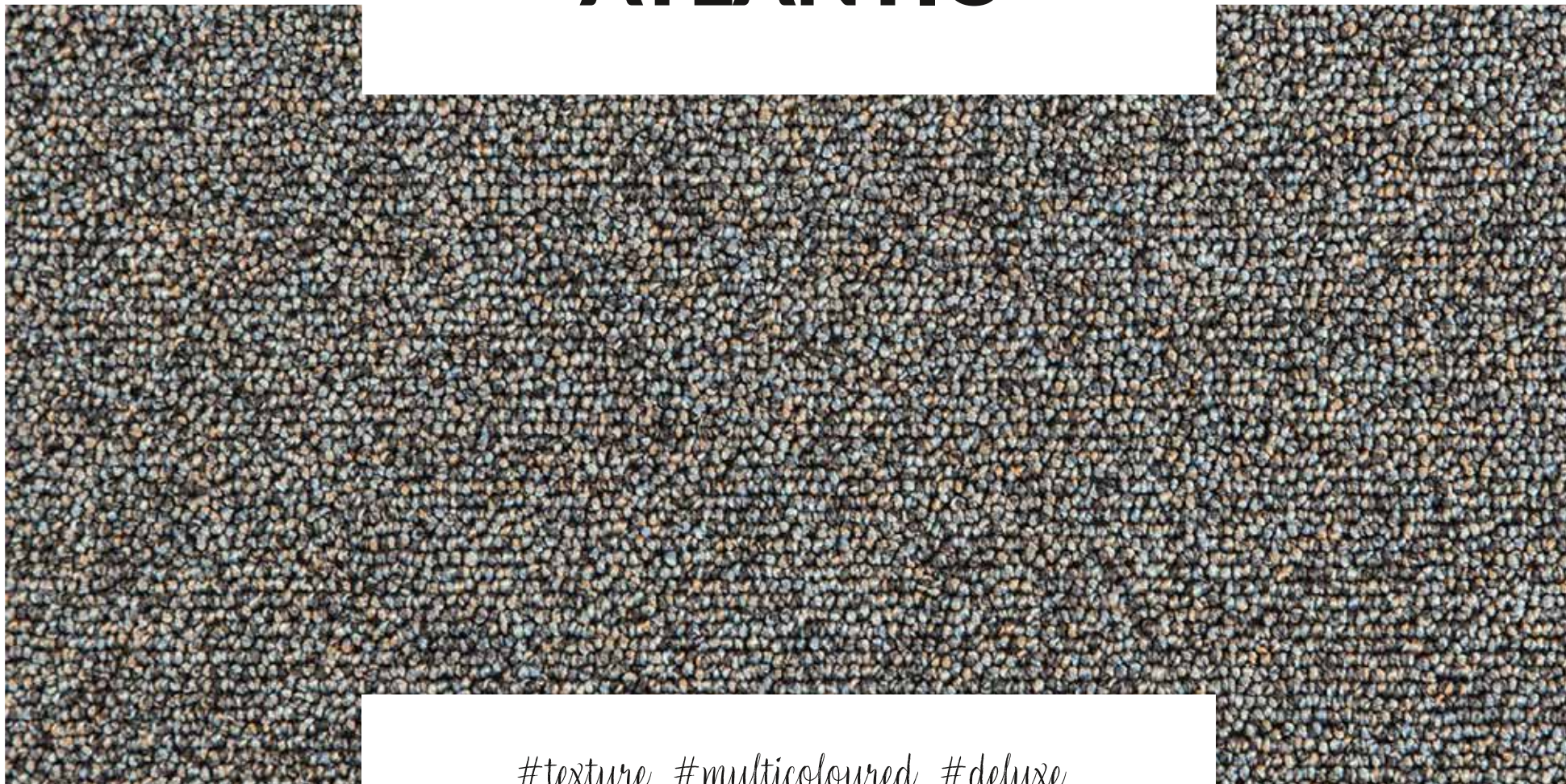


Custom colours
> 400m²

ECONYL®
ENDLESS POSSIBILITIES



ATLANTIC



#texture #multicoloured #deluxe

STYLE
LOOP PILE

COMPOSITION
100% PA – SDN

PILE WEIGHT
1.000 G/M²

TOTAL THICKNESS
7,0 MM

RATINGS
CL 33 / BFL-S1



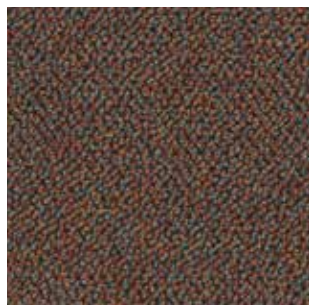
ATLANTIC
576_50

ATLANTIC
576_20 & 38 & 50

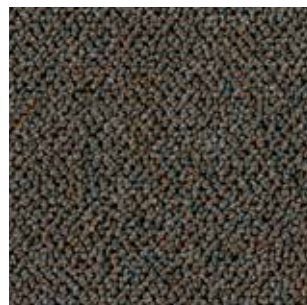




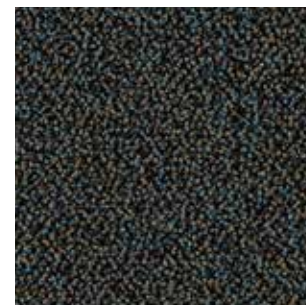
576_20



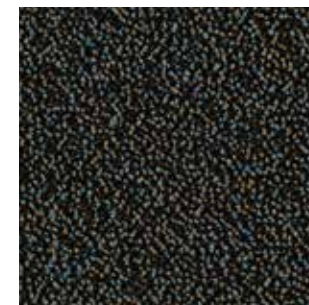
576_38



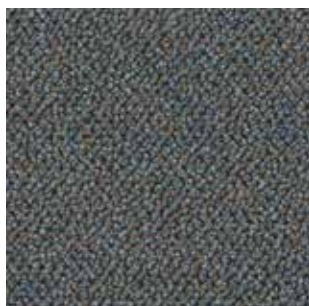
576_40



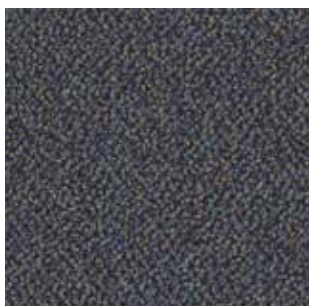
576_50



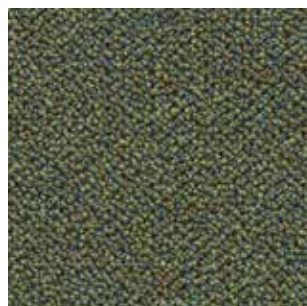
576_55



576_60

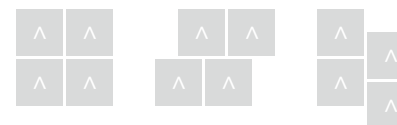
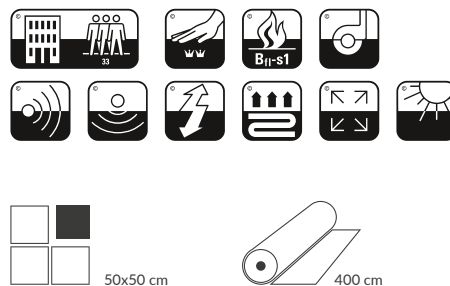


576_62

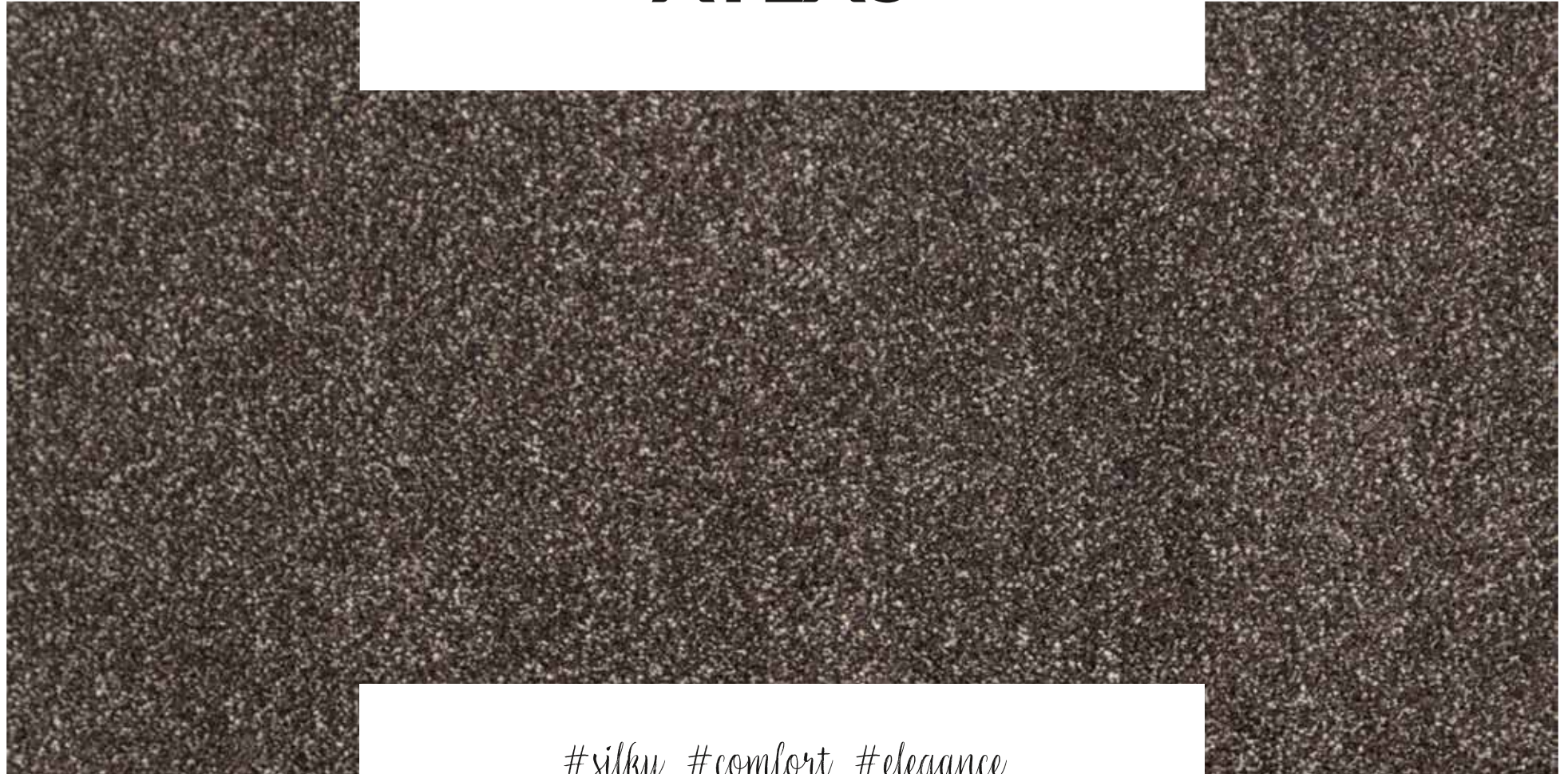


576_70

EN 14041
CE
 16
 DOP 000576T-001
 EN1307
 For use as textile
 floorcovering in buildings.



ATLAS



#silky #comfort #elegance

STYLE
CUT PILE

COMPOSITION
100% PA

PILE WEIGHT
1.250 G/M²

TOTAL THICKNESS
8,5 MM

RATINGS
CL 32 / BFL-S1

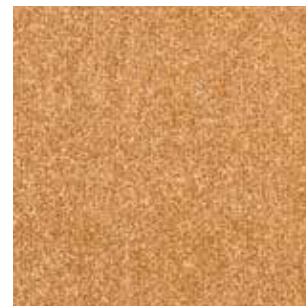


ATLAS
513_35

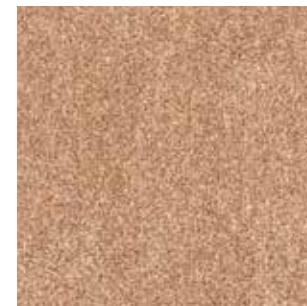
ATLAS
513_60



513_10



513_20



513_22



513_40



513_42



513_49



513_80



513_23



513_31



513_35



513_36



513_38



513_50



513_51



513_52

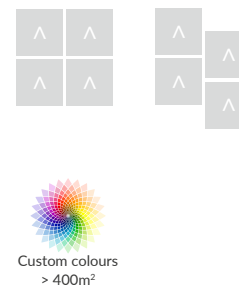
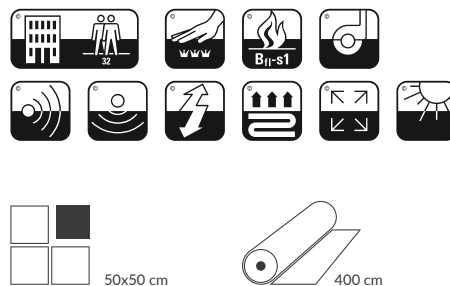


513_60



513_64

EN 14041
CE
16
DOP 000513B-001
EN1307
For use as textile
floorcovering in buildings.



BEACH



#pattern #nature #zoning

STYLE

STRUCTURED LOOP PILE

COMPOSITION

100% PA - SDN

PILE WEIGHT

700 G/M²

TOTAL THICKNESS

7,4 MM

RATINGS

CL 33 / BFL-S1



BEACH
612_51 & 76

BEACH
612_76





612_24



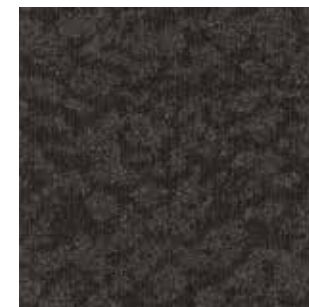
612_32



612_38



612_51



612_55



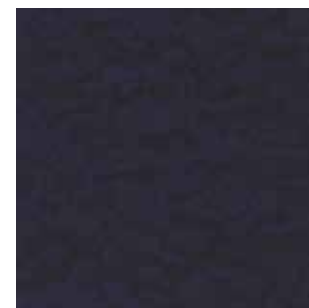
612_56



612_60



612_61

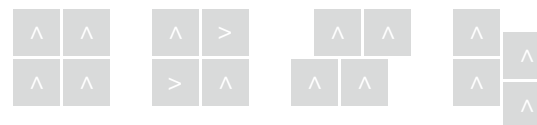
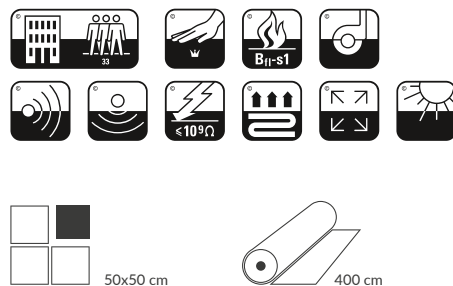


612_62

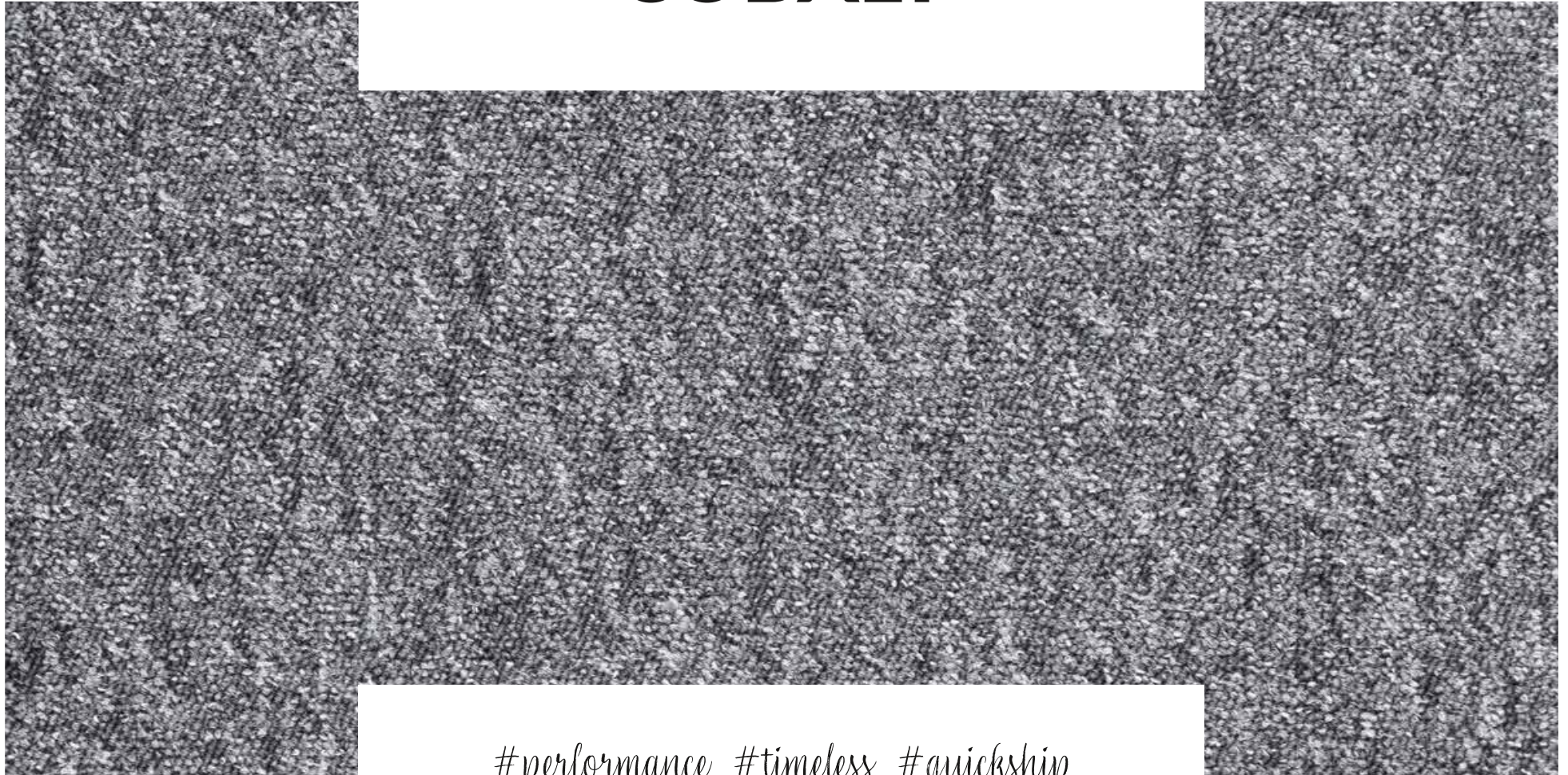


612_76

EN 14041
CE
 19
 DOP 000612T-001
 EN1307
 For use as textile
 floorcovering in buildings.



COBALT



#performance #timeless #quickship

STYLE
LOOP PILE

COMPOSITION
100% PA - SDN

PILE WEIGHT
550 G/M²

TOTAL THICKNESS
6,0 MM

RATINGS
CL 33 / BFL-S1



COBALT
423_42 & 50 & 70

COBALT
518_70 & 76



30



423_09



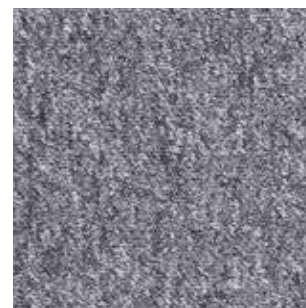
423_20



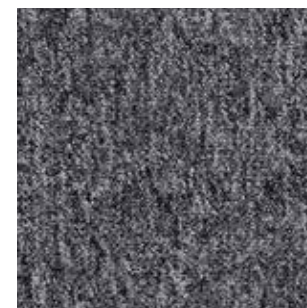
423_31



423_40



423_42



423_50



423_51



423_60



423_61



423_70



423_80



518_20



518_22



518_23



518_31



518_32



518_61



518_62



518_70

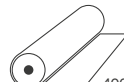


518_76

EN 14041
CE
 19
 DOP 000423T-001
 EN1307
 For use as textile
 floorcovering in buildings.



50x50 cm



400 cm



COBALT ART



#performance #timeless #quickship

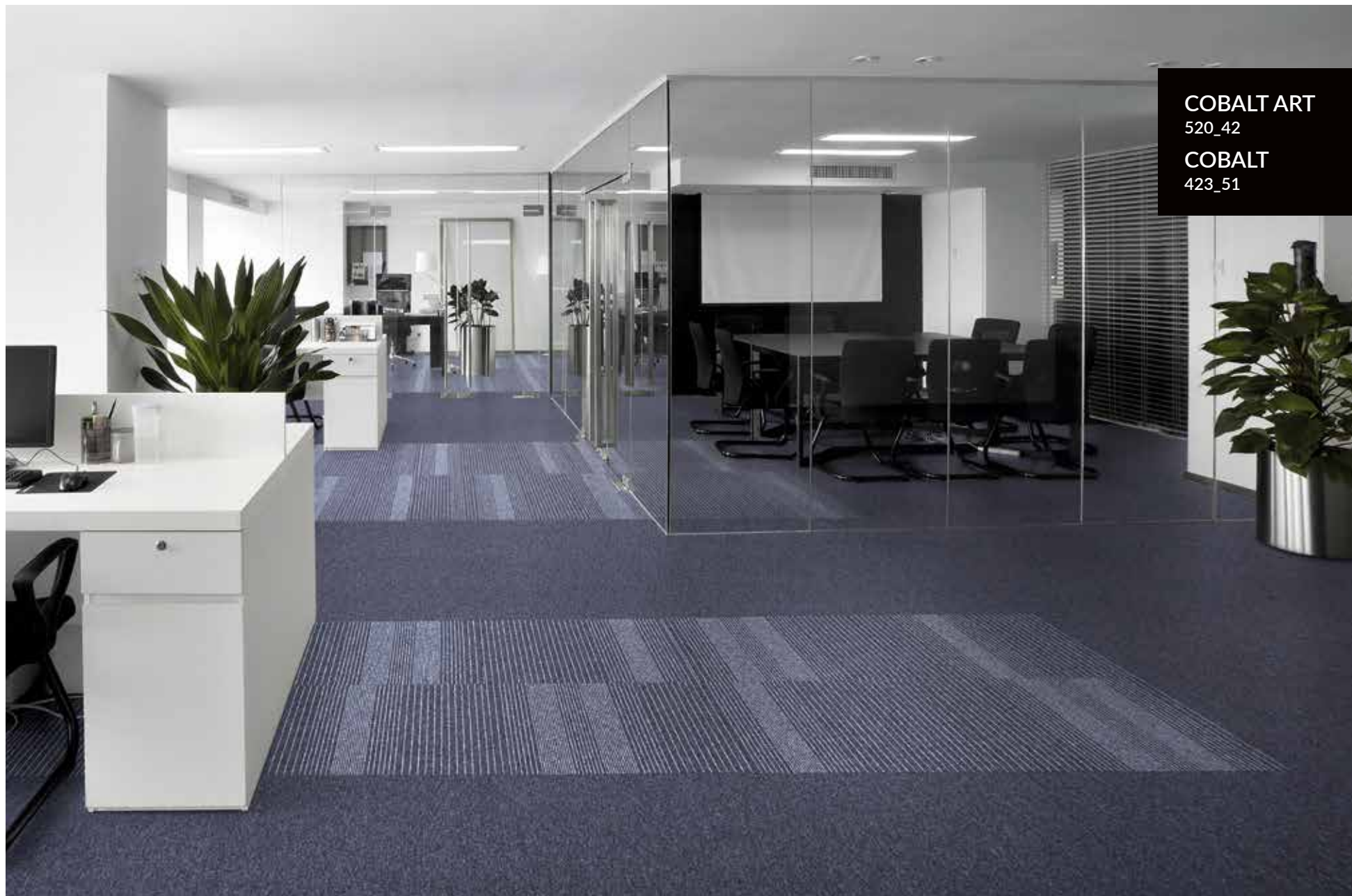
STYLE
LOOP PILE

COMPOSITION
100% PA - SDN

PILE WEIGHT
550 G/M²

TOTAL THICKNESS
6,0 MM

RATINGS
CL 33 / BFL-S1



COBALT ART

520_42

COBALT

423_51

COBALT ART
520_42
COBALT
423_51



520_42



520_51



520_64

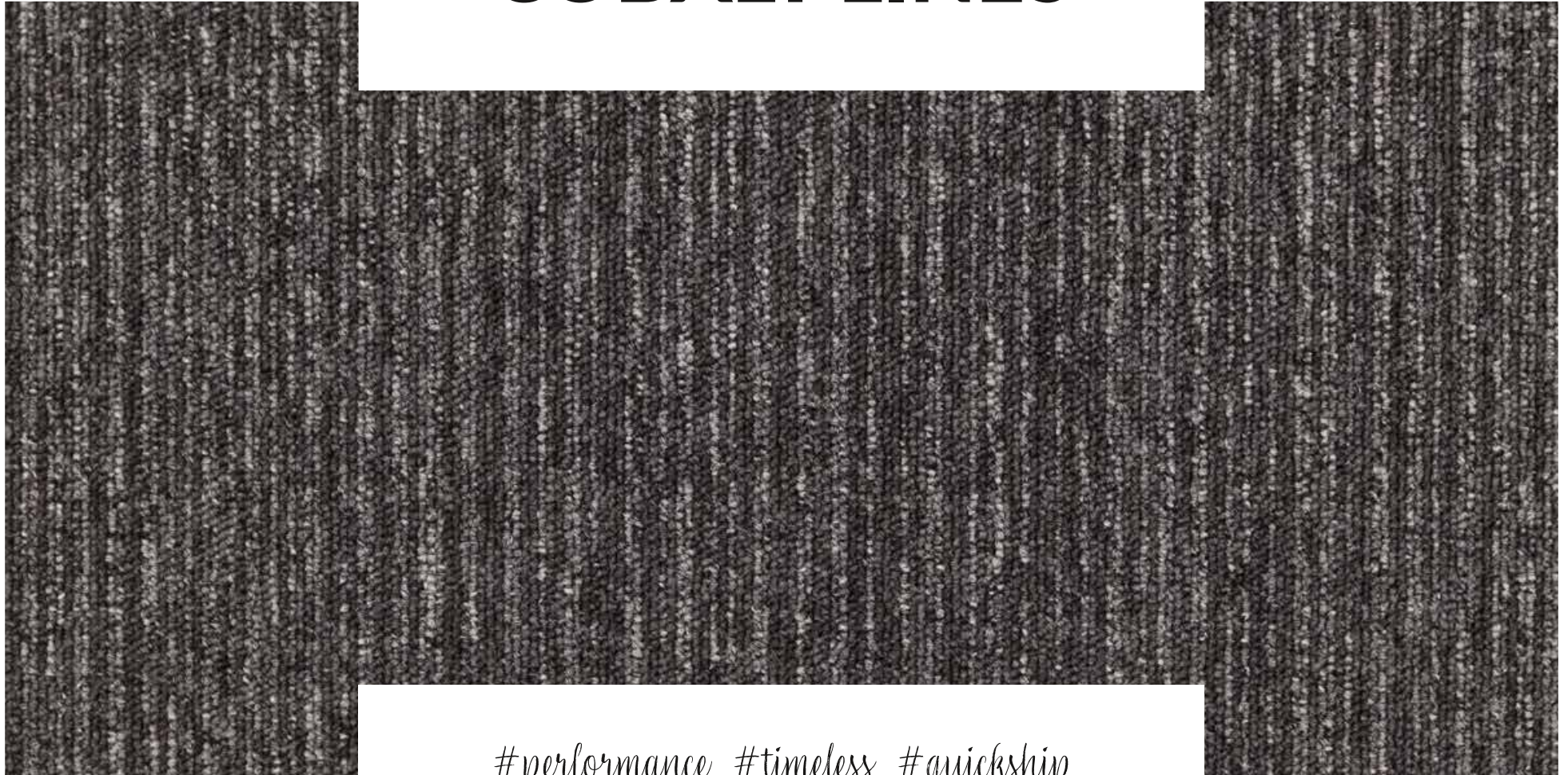


520_68

EN 14041
CE
 19
 DOP 000423T-001
 EN1307
 For use as textile
 floorcovering in buildings.



COBALT LINES



#performance #timeless #quickship

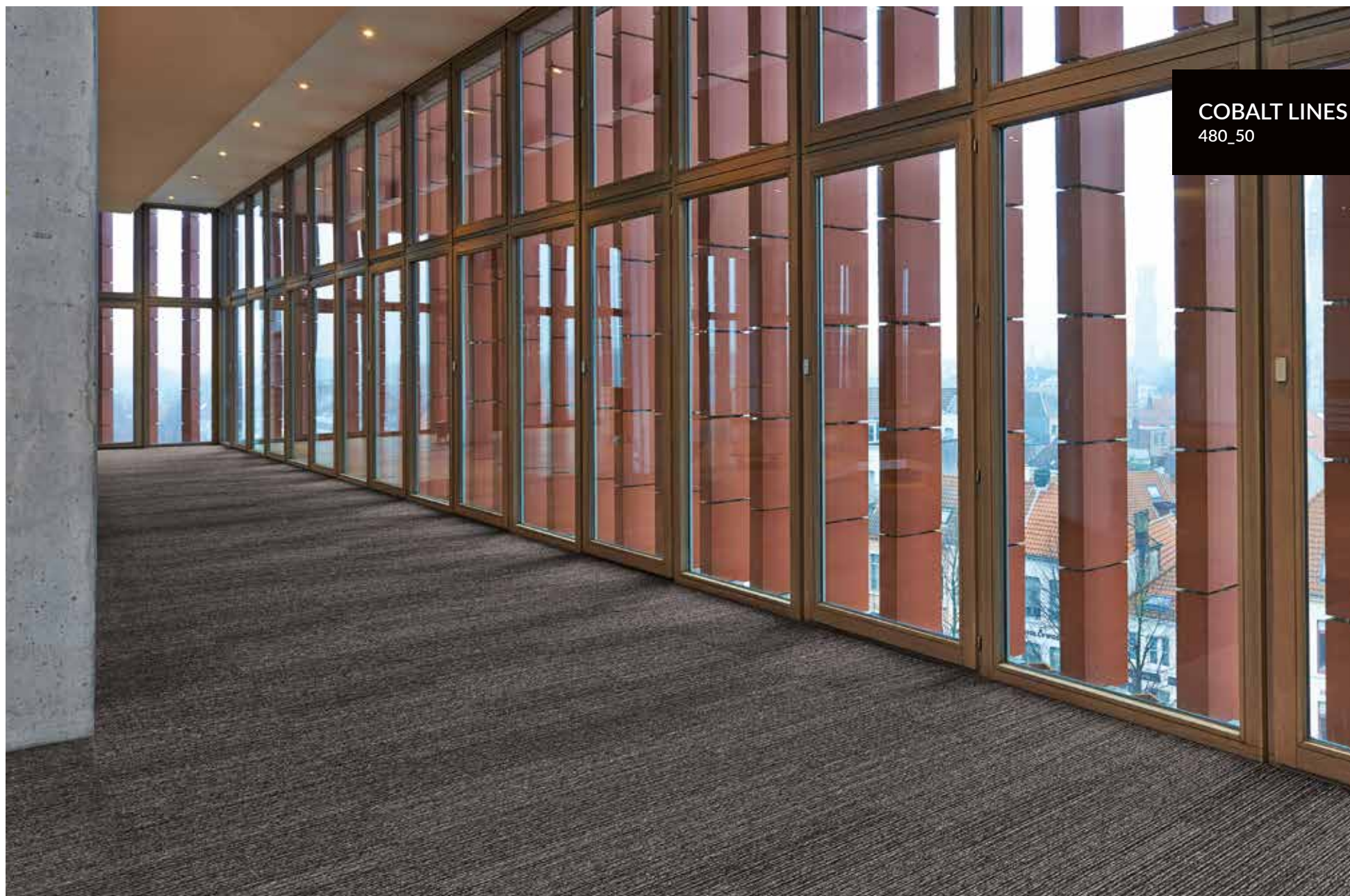
STYLE
LOOP PILE

COMPOSITION
100% PA - SDN

PILE WEIGHT
550 G/M²

TOTAL THICKNESS
6,0 MM

RATINGS
CL 33 / BFL-S1



COBALT LINES
480_50

COBALT LINES
480_80





480_31



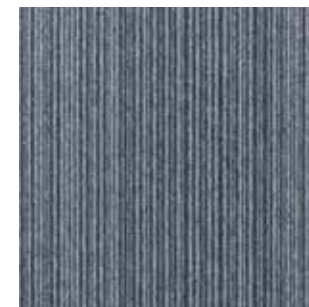
480_40



480_45



480_50



480_60



480_61



480_70



480_80

EN 14041
CE
19
DOP 000423T-001

EN1307
For use as textile
floorcovering in buildings.



50x50 cm



400 cm



CORAL (LINES)



#budgetfriendly #hardwearing #functional

STYLE
LOOP PILE

COMPOSITION
100% PA - SDN

PILE WEIGHT
485 G/M²

TOTAL THICKNESS
5,5 MM

RATINGS
CL 33 / BFL-S1

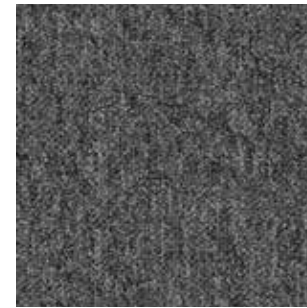
CORAL
583_51 & 76



CORAL COLLECTION



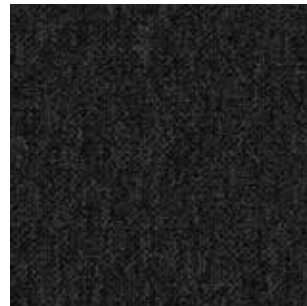
583_09



583_42



583_50



583_51



583_60



583_76



583_80

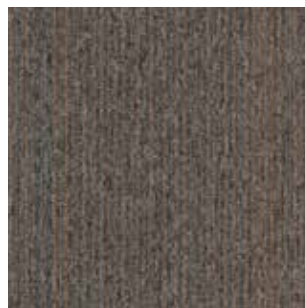
CORAL
583_42 & 60

CORAL LINES

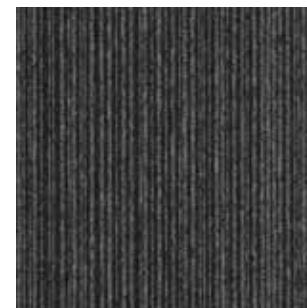
603_40 & 45



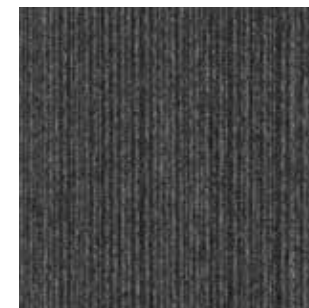
CORAL LINES COLLECTION



603_09



603_40



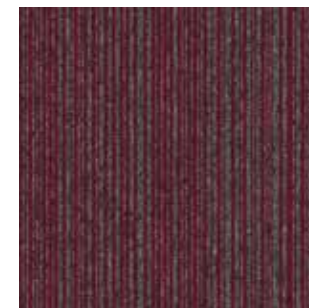
603_45



603_60



603_76



603_80

EN 14041
CE
19
DOP 000583T-001

EN1307
For use as textile
floorcovering in buildings.



50x50 cm



400 cm



COUNTRY (LINES)



#scandinavian #reversetuft #hardwearing

STYLE
ULTRATUFT

COMPOSITION
100% PA - SDN

PILE WEIGHT
550 G/M²

TOTAL THICKNESS
5,5 MM

RATINGS
CL 33 / BFL-S1

COUNTRY LINES
496_50



COUNTRY LINES COLLECTION



496_31



496_40



496_45



496_50



496_60



496_61



496_70



496_80

—

COUNTRY COLLECTION



—

495_09



—

495_20



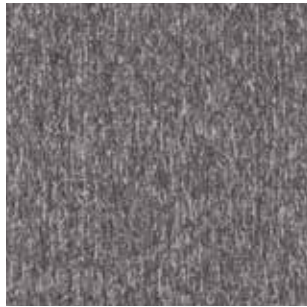
—

495_31



—

495_40



—

495_42



—

495_50



—

495_51



—

495_60



—

495_61



—

495_70



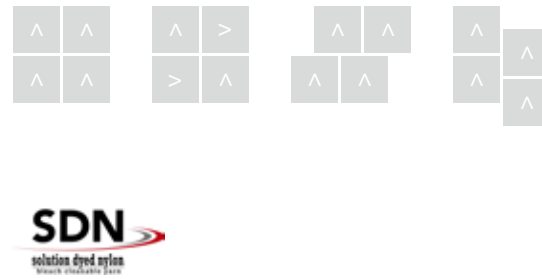
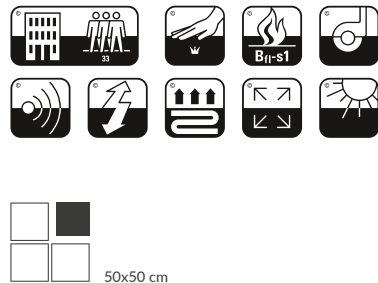
—

495_80



COUNTRY
495_42 & 61

EN 14041
CE
19
DOP 000495T-001
EN1307
For use as textile
floorcovering in buildings.



EARTH

ECONYL®
ENDLESS POSSIBILITIES



#innovative #dynamicdesign #natural

STYLE

STRUCTURED LOOP PILE

COMPOSITION

100% PA - ECONYL® - SDN

PILE WEIGHT

800 G/M²

TOTAL THICKNESS

8,0 MM

RATINGS

CL 33 / BFL-S1



EARTH
611_25



611_10



611_11



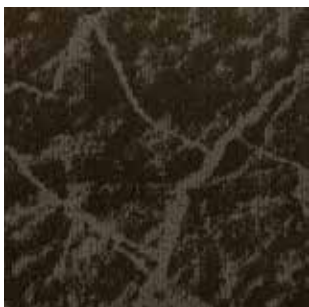
611_20



611_23



611_25



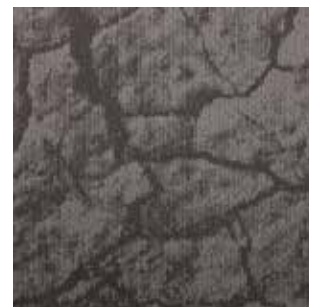
611_32



611_34



611_40



611_41



611_42




















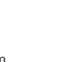


611_50



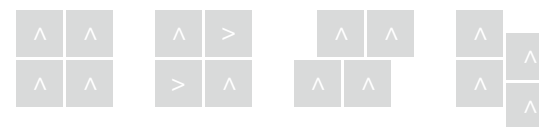
EARTH
611_10

EN 14041
CE
20
DOP 000611T-001

EN1307
For use as textile
floorcovering in buildings.

50x50 cm 400 cm



ECONYL®
ENDLESS POSSIBILITIES

SDN
solution dyed nylon
without endurable face

ÉMISSIONS DANS L'AIR INTÉRIEUR



TÜV PROFI
10-10-2012

TI tested for emissions, harmful substances

FRESCO



#chunkyloop #texture #contrastingcolours

STYLE

STRUCTURED LOOP PILE

COMPOSITION

100% PA - ECONYL® - SDN

PILE WEIGHT

1.000 G/M²

TOTAL THICKNESS

7,5 MM

RATINGS

CL 33 / BFL-S1



FRESCO
589_50

FRESCO
589_40





589_20



589_40



589_50



589_60



589_70



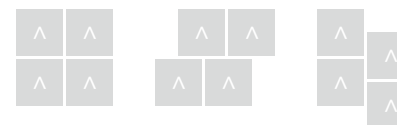
589_80

EN 14041
CE
18
DOP 000589B-001

EN1307
For use as textile
floorcovering in buildings.



50x50 cm



ECONYL®
ENDLESS POSSIBILITIES

SDN
solution dyed nylon
Washable machine wash



GRANITE



#hightraffic #performance #antisoiling

STYLE

STRUCTURED LOOP PILE

COMPOSITION

100% PA - ECONYL®

PILE WEIGHT

800 G/M²

TOTAL THICKNESS

7,0 MM

RATINGS

CL 33 / BFL-S1



GRANITE
538_20

GRANITE
538_40





538_20



538_30



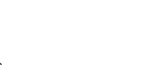
538_40



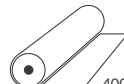
538_50

EN 14041
CE
 16
 DOP 000538T-001

EN1307
 For use as textile
 floorcovering in buildings.



50x50 cm



400 cm



ECONYL®
 ENDLESS POSSIBILITIES



GROOVE (TONES)



#durable #mixmatch #timelessdesign

STYLE

LOOP PILE

COMPOSITION

100% PA - ECONYL® - SDN

PILE WEIGHT

580 G/M²

TOTAL THICKNESS

6,5 MM

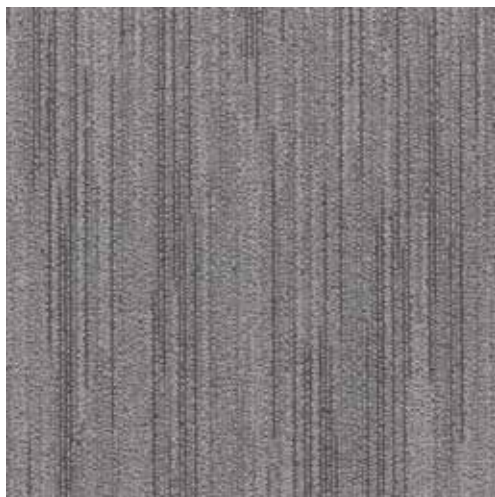
RATINGS

CL 33 / BFL-S1

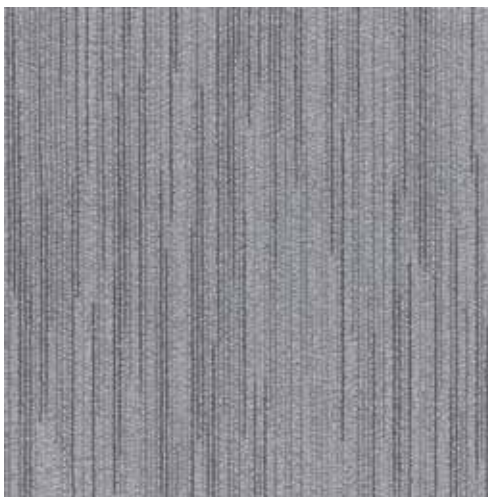


GROOVE
621_40 & 65

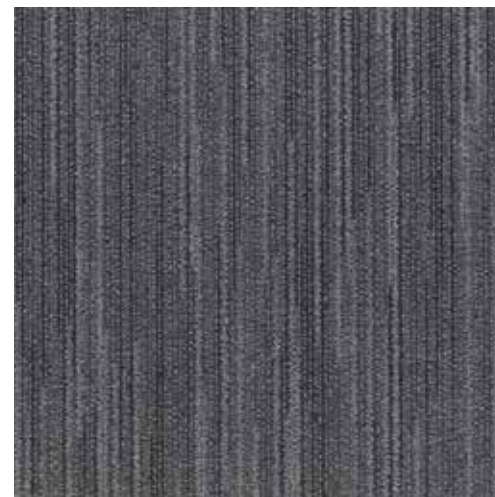
GROOVE COLLECTION



621_22



621_40



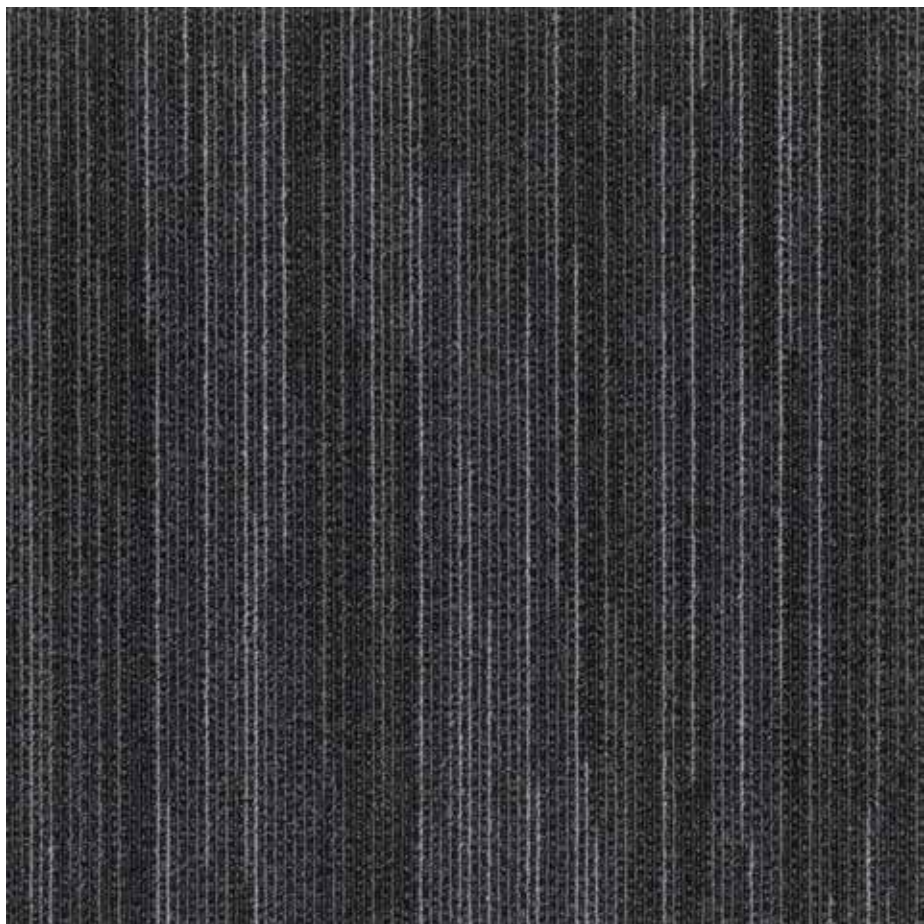
621_42



621_62



621_85



621_50



621_65

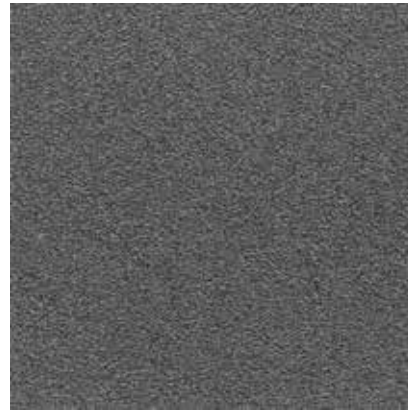
GROOVE TONES COLLECTION



623_22



623_40



623_42



623_50

64



623_62



623_65



623_85



GROOVE TONES

623_50

GROOVE

621_40

EN 14041



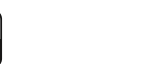
20

DOP 000621T-001

DOP 000623T-001

EN1307

For use as textile
floorcovering in buildings.



50x50 cm



400 cm



ECONYL®
ENDLESS POSSIBILITIES

SDN
solution dyed nylon
without endurable face



GROOVE BRICK



#dynamicdesign #mixmatch #zoning

STYLE

STRUCTURED LOOP PILE

COMPOSITION

100% PA - ECONYL® - SDN

PILE WEIGHT

620 G/M²

TOTAL THICKNESS

7,0 MM

RATINGS

CL 33 / BFL-S1



GROOVE BRICK
622_22



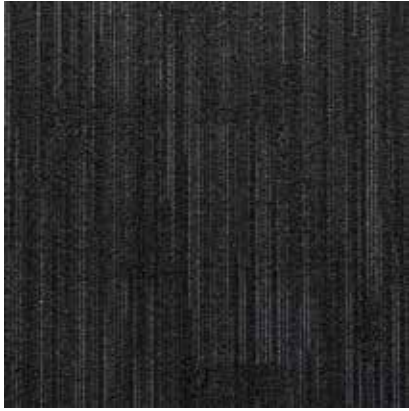
622_22



622_40



622_42



622_50



622_62



622_65



622_85



GROOVE TONES

623_42

GROOVE BRICK

622_62

EN 14041
CE
 20
 DOP 000622T-001

EN1307
 For use as textile
 floorcovering in buildings.



50x50 cm



400 cm

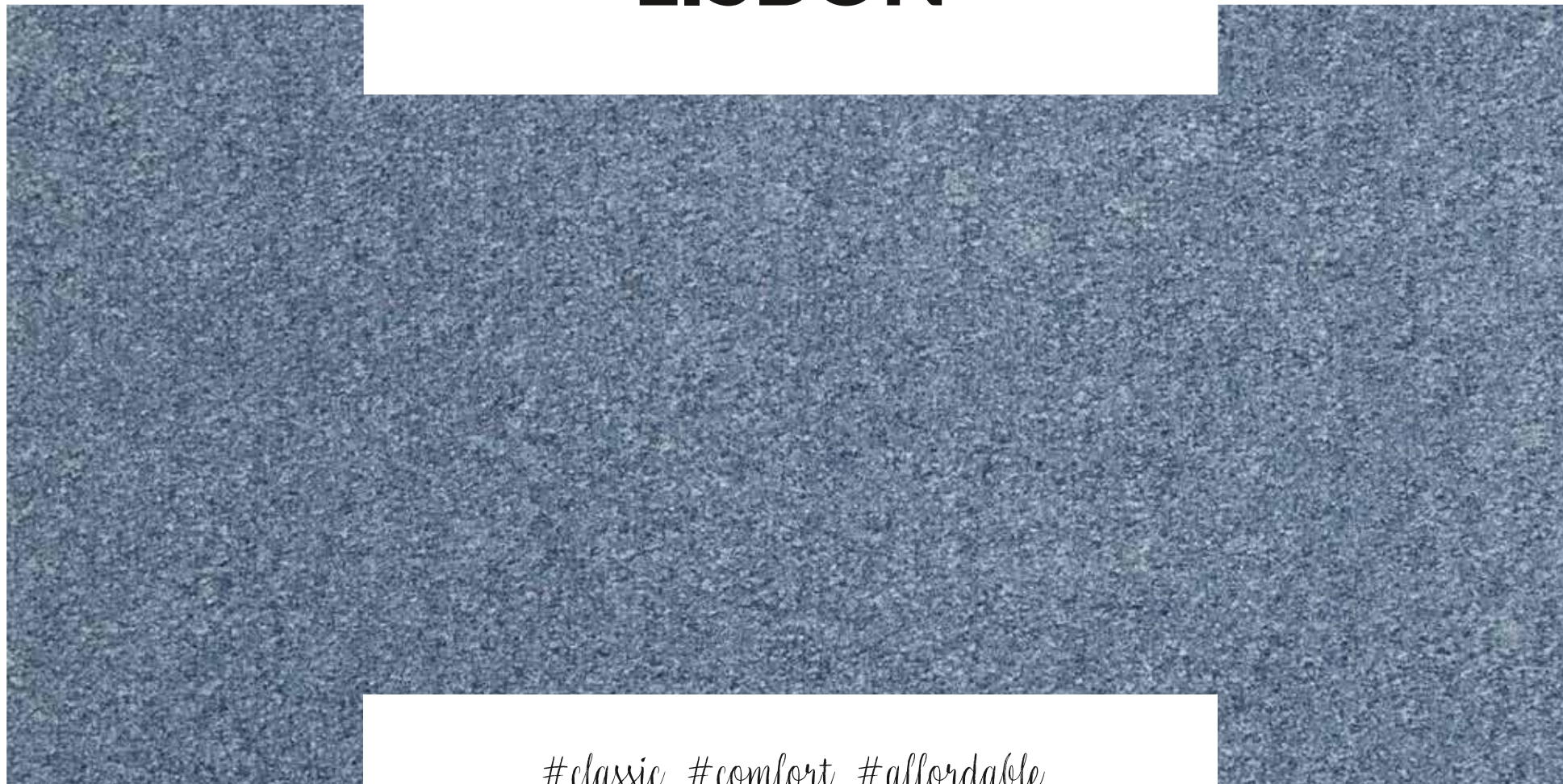


ECONYL®
 ENDLESS POSSIBILITIES

SDN
 solution dyed nylon
 without endurable face



LISBON



#classic #comfort #affordable

STYLE
VELOURS

COMPOSITION
100% PA

PILE WEIGHT
700 G/M²

TOTAL THICKNESS
7,5 MM

RATINGS
CL 33 / BFL-S1



LISBON
515_38 & 61



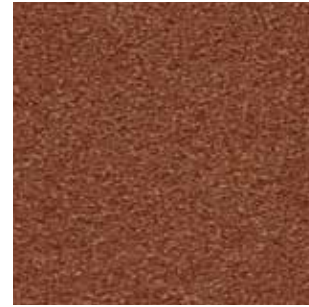
515_20



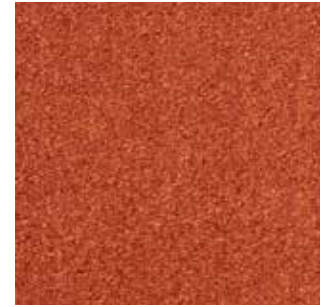
515_21



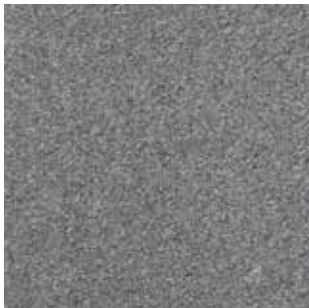
515_30



515_38



515_39



515_42



515_50



515_61



515_62



515_70

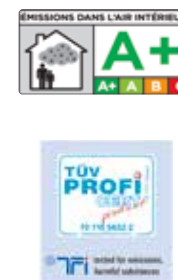
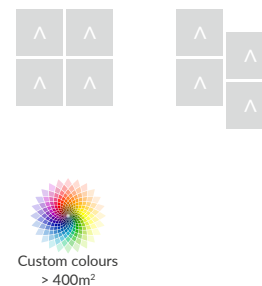
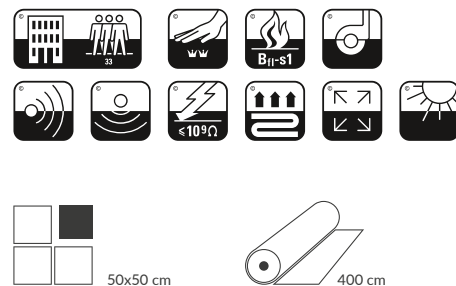


515_83

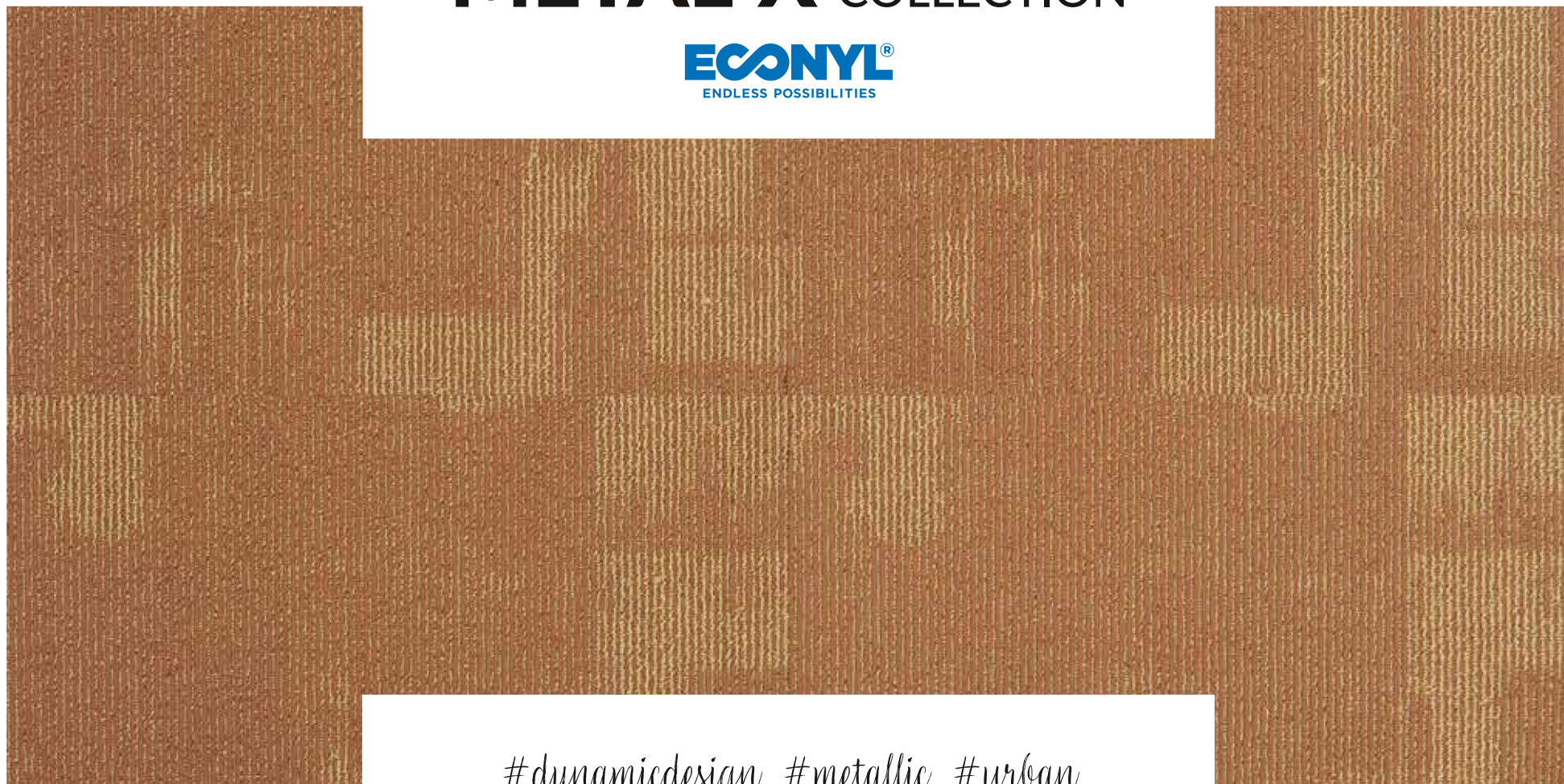


LISBON
515_42

EN 14041
CE
17
DOP 000515T-001
EN1307
For use as textile
floorcovering in buildings.



METAL-X COLLECTION



#dynamicdesign #metallic #urban

STYLE

STRUCTURED LOOP PILE

COMPOSITION

100% PA - ECONYL® - SDN

PILE WEIGHT

800 G/M²

TOTAL THICKNESS

7,0 MM

RATINGS

CL 33 / BFL-S1



URBAN
567_38

5 DESIGNS:



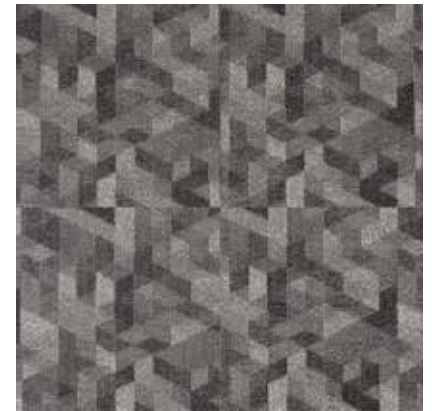
DESIGN: URBAN
DESIGN CODE: 567
COLOUR: 38



DESIGN: URBAN BRICK
DESIGN CODE: 568
COLOUR: 50



DESIGN: GEO
DESIGN CODE: 569
COLOUR: 40



DESIGN: ARCHI
DESIGN CODE: 570
COLOUR: 50



DESIGN: CONSTRUCT
DESIGN CODE: 571
COLOUR: 40



GEO
569_40



ARCHI
570_48

—
ALL DESIGNS ARE AVAILABLE IN 7 COLOURS:



—
colour_23



—
colour_38



—
colour_40



—
colour_47



—
colour_48



—
colour_50



—
colour_84



ARCHI
570_47

EN 14041
CE
16
DOP 000578T-001

EN1307
For use as textile
floorcovering in buildings.



50x50 cm



400 cm

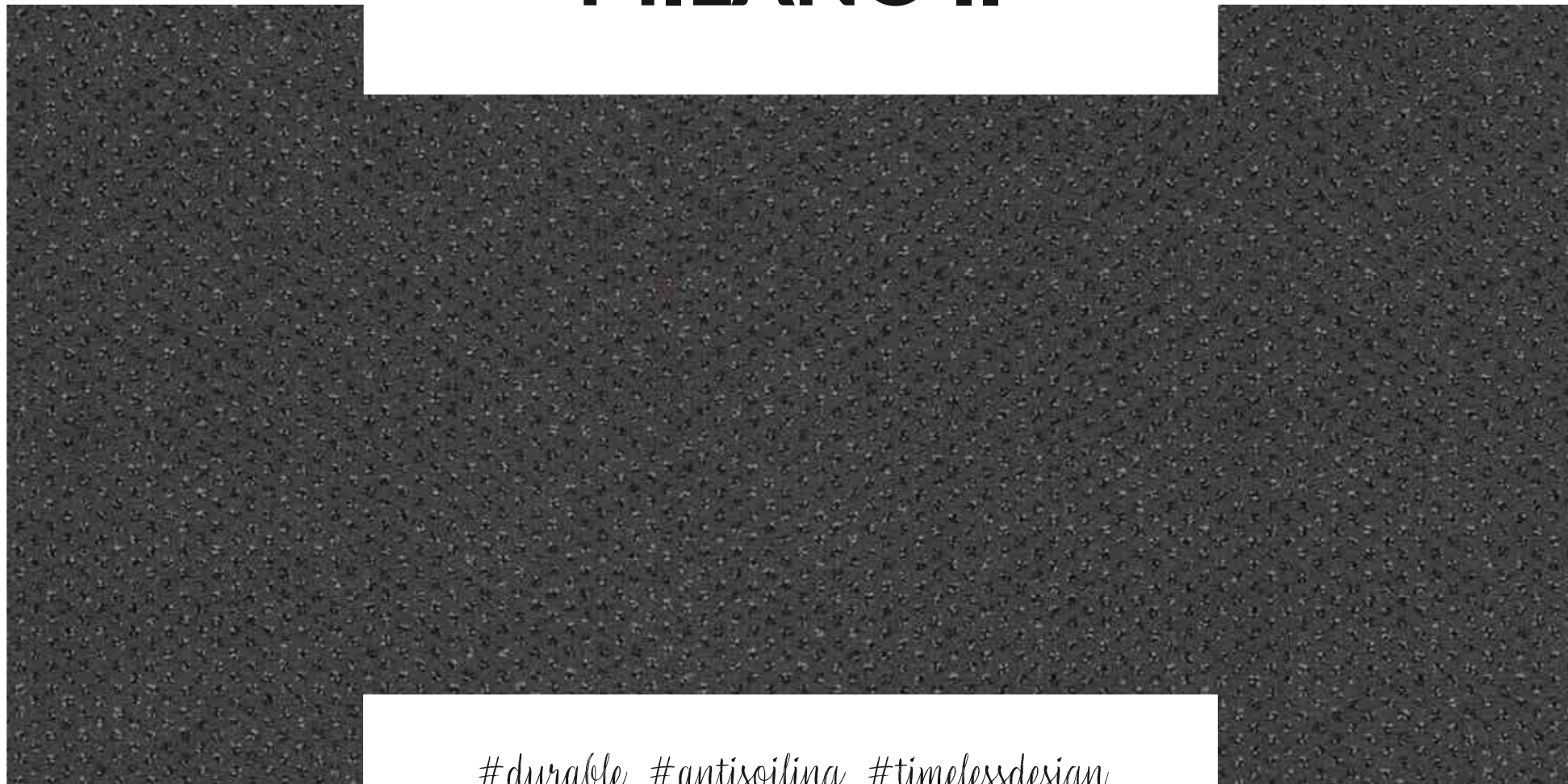


ECONYL®
ENDLESS POSSIBILITIES

SDN
solution dyed nylon
without endurable face



MILANO II



80

#durable #antisoiling #timelessdesign

STYLE
COC VELOURS

COMPOSITION
100% PA – SDN

PILE WEIGHT
800 G/M²

TOTAL THICKNESS
7,0 MM

RATINGS
CL 33 / BFL-S1

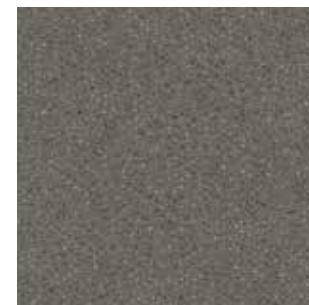


MILANO II
609_42

MILANO II
609_50



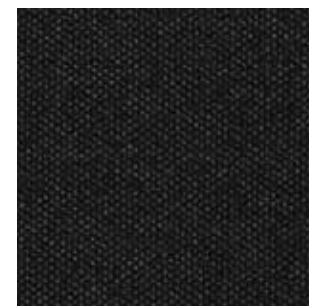
609_20



609_22



609_50



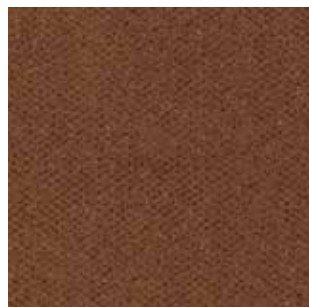
609_51



609_25



609_31



609_38



609_40



609_42



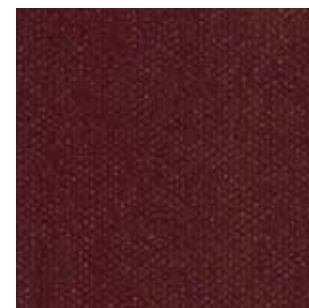
609_60



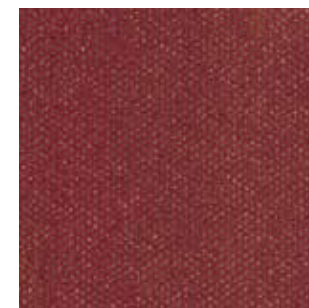
609_64



609_76



609_80



609_81

EN 14041
CE
18
DOP 000595B-001

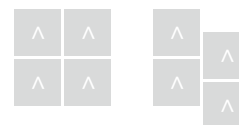
EN1307
For use as textile
floorcovering in buildings.



50x50 cm



400 cm



MISTRAL



#stylish #candystripe #dynamicdesign

STYLE

STRUCTURED LOOP PILE

COMPOSITION

100% PA

PILE WEIGHT

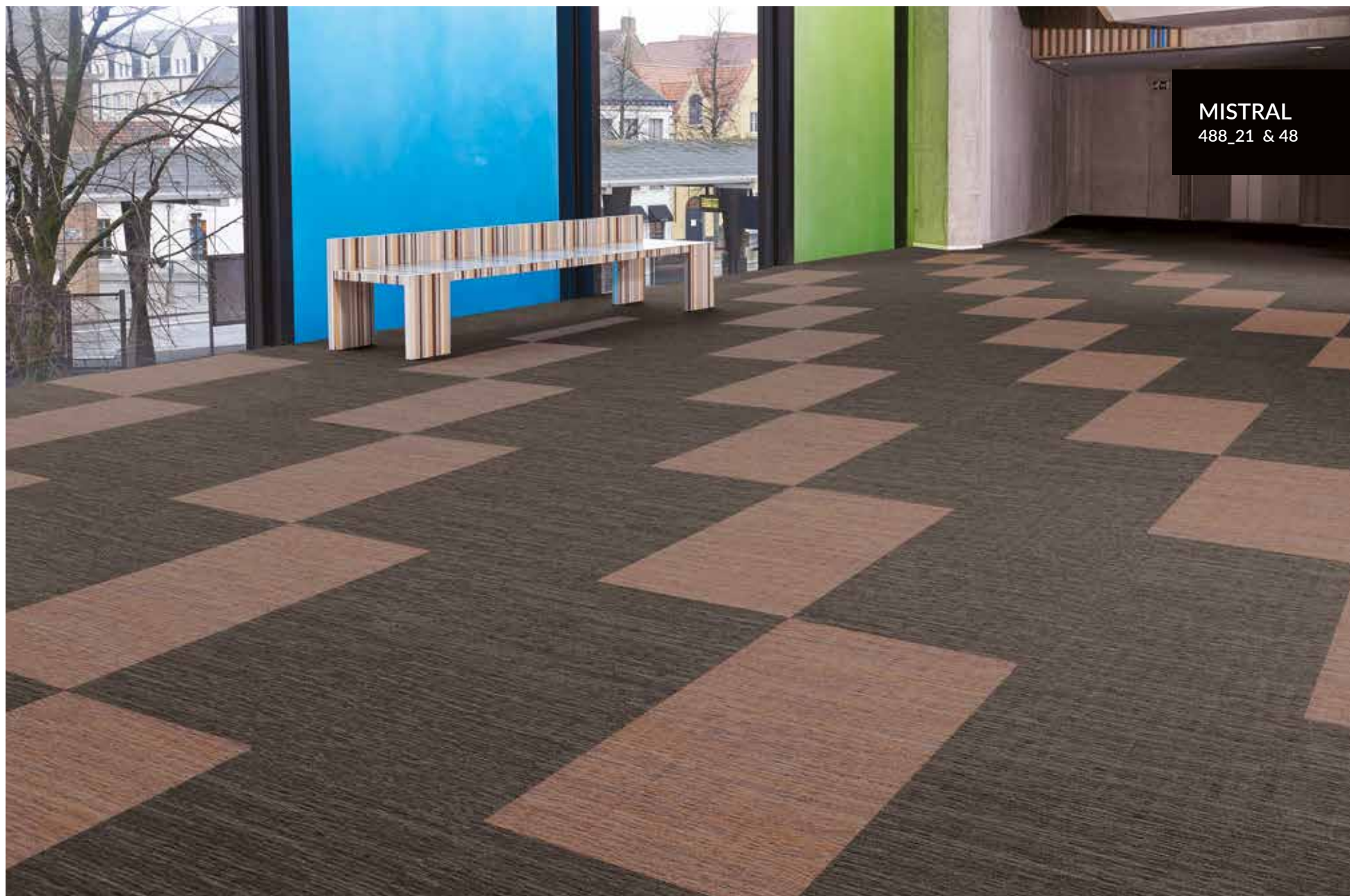
850 G/M²

TOTAL THICKNESS

6,5 MM

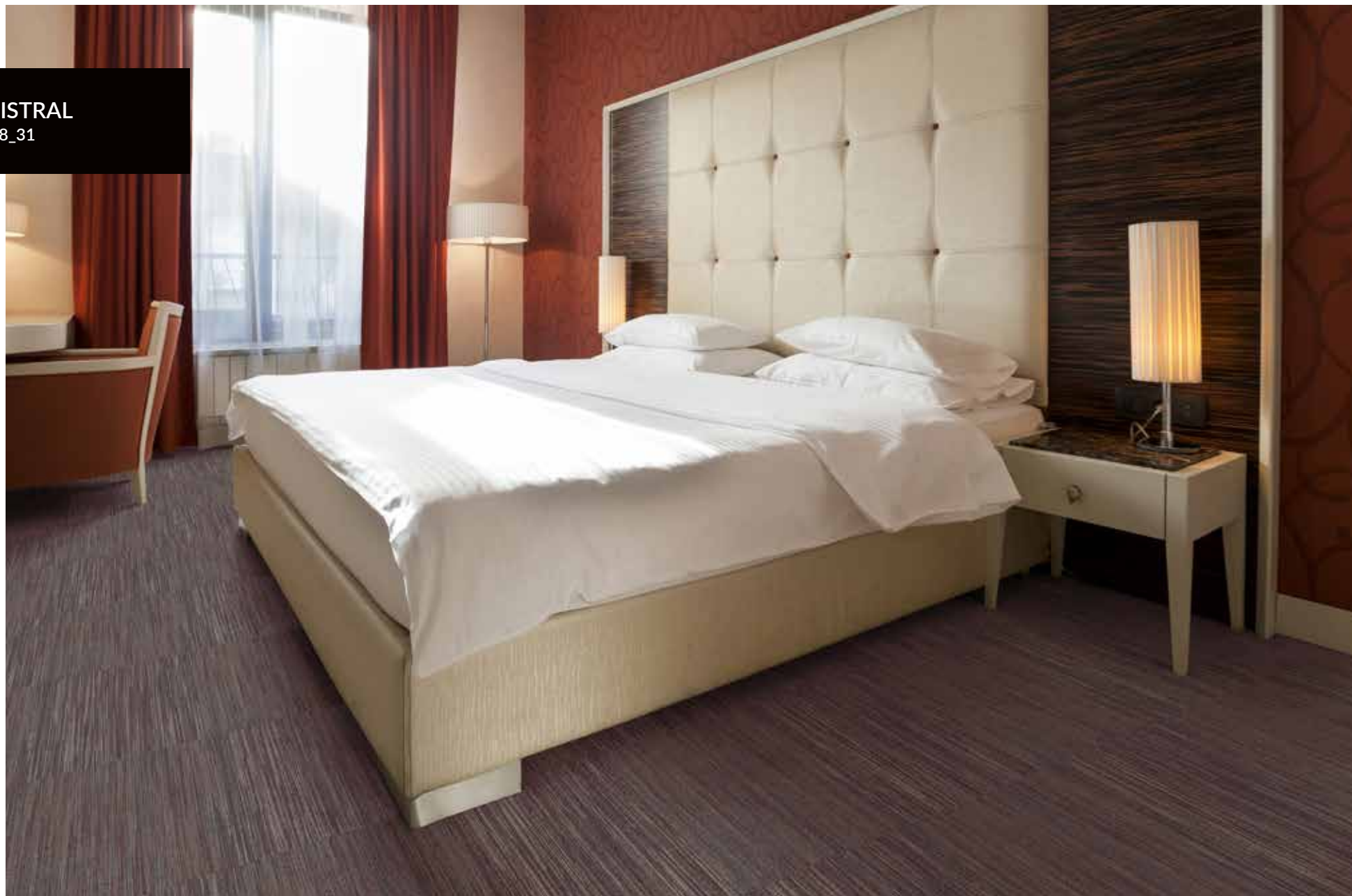
RATINGS

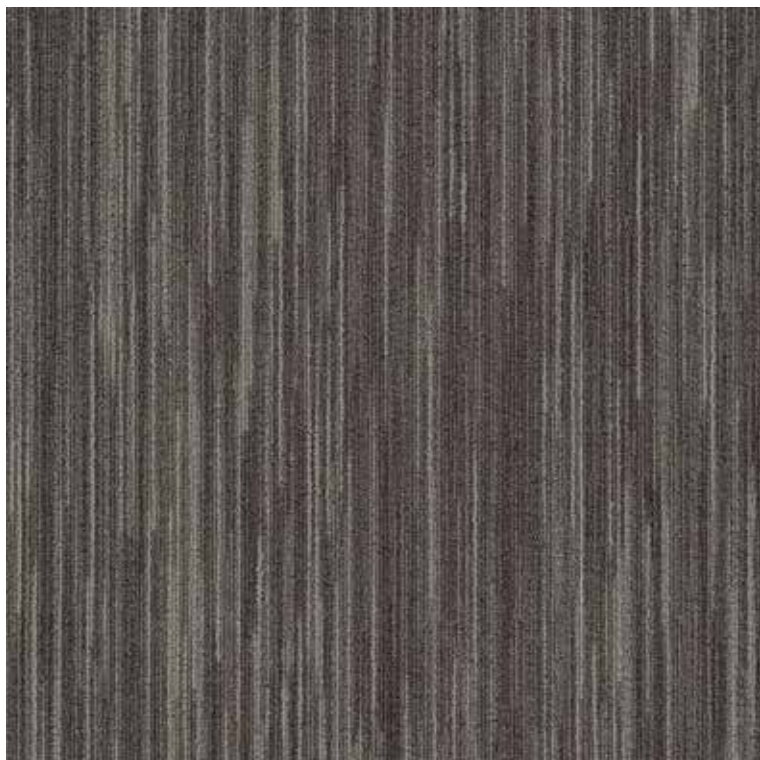
CL 33 / BFL-S1



MISTRAL
488_21 & 48

MISTRAL
488_31

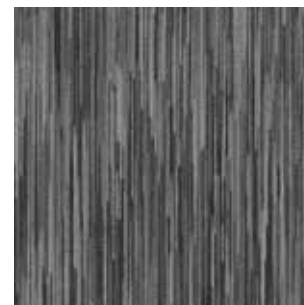




488_21



488_31

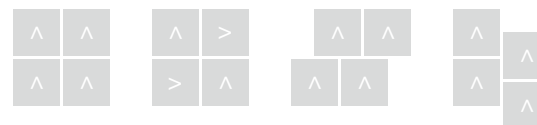
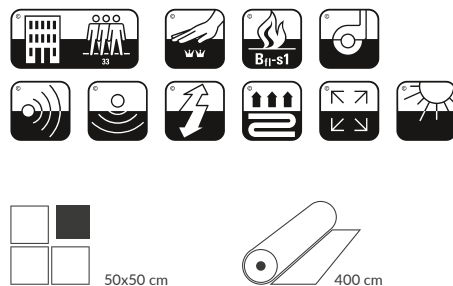


488_41



488_48

EN 14041
CE
 16
 DOP 000488B-003
 EN1307
 For use as textile
 floorcovering in buildings.



MYRAGE collection



#industrialdesign #budgetfriendly #quickship

STYLE

STRUCTURED LOOP PILE

COMPOSITION

100% PA - SDN

PILE WEIGHT

680 G/M²

TOTAL THICKNESS

6,8 MM

RATINGS

CL 33 / BFL-S1



STRATOS
564_60

8 DESIGNS:



DESIGN: CARAT
DESIGN CODE: 547
COLOUR: 50



DESIGN: CLAUDIA
DESIGN CODE: 548
COLOUR: 50



DESIGN: SPARTA
DESIGN CODE: 549
COLOUR: 51



DESIGN: LEGEND
DESIGN CODE: 559
COLOUR: 32



DESIGN: PARADE
DESIGN CODE: 561
COLOUR: 55



DESIGN: SCULPTURE
DESIGN CODE: 563
COLOUR: 55

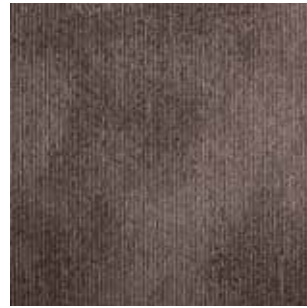


DESIGN: STRATOS
DESIGN CODE: 564
COLOUR: 60



DESIGN: CONCRETE
DESIGN CODE: 577
COLOUR: 51

—
ALL DESIGNS ARE AVAILABLE IN 9 COLOURS:



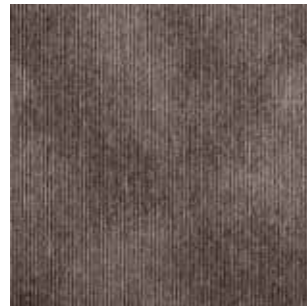
—
colour_32



—
colour_50



—
colour_51



—
colour_52



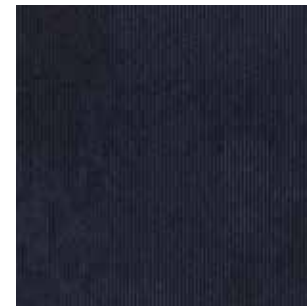
—
colour_55



—
colour_60



—
colour_61



—
colour_62



—
colour_70

CARAT
547_52



MYRAGE
PARADE 561_51 & STRATOS 564_55





SCULPTURE
563_32

EN 14041
CE
16
DOP 000572T-001
EN1307
For use as textile
floorcovering in buildings.

MYRIAD collection



#industrialdesign #flooringconcept #sustainability

STYLE

STRUCTURED LOOP PILE

COMPOSITION

100% PA - ECONYL® - SDN

PILE WEIGHT

680 G/M²

TOTAL THICKNESS

6,8 MM

RATINGS

CL 33 / BFL-S1



8 DESIGNS:



DESIGN: CAMOU
DESIGN CODE: 539
COLOUR: 40



DESIGN: CLOUD
DESIGN CODE: 540
COLOUR: 50



DESIGN: SPEED
DESIGN CODE: 541
COLOUR: 24



DESIGN: PAINT
DESIGN CODE: 542
COLOUR: 10



DESIGN: SCRIPT
DESIGN CODE: 544
COLOUR: 10



DESIGN: STRUCTURE
DESIGN CODE: 545
COLOUR: 20



DESIGN: MARBLE
DESIGN CODE: 546
COLOUR: 60



DESIGN: LEAF
DESIGN CODE: 558
COLOUR: 42

ALL DESIGNS ARE AVAILABLE IN 8 COLOURS:



colour_10



colour_20



colour_24



colour_32



colour_40



colour_42



colour_50



colour_60



LEAF
558_10

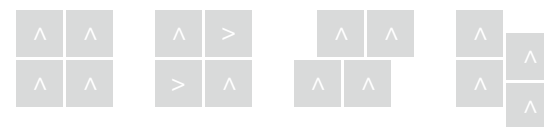




CLOUD
540_32

EN 14041
CE
 16
 DOP 000553T-001
 ———
 EN1307
 For use as textile
 floorcovering in buildings.

50x50 cm 400 cm



ECONYL®
 ENDLESS POSSIBILITIES

SDN
 solution dyed nylon
 without endurable yarn

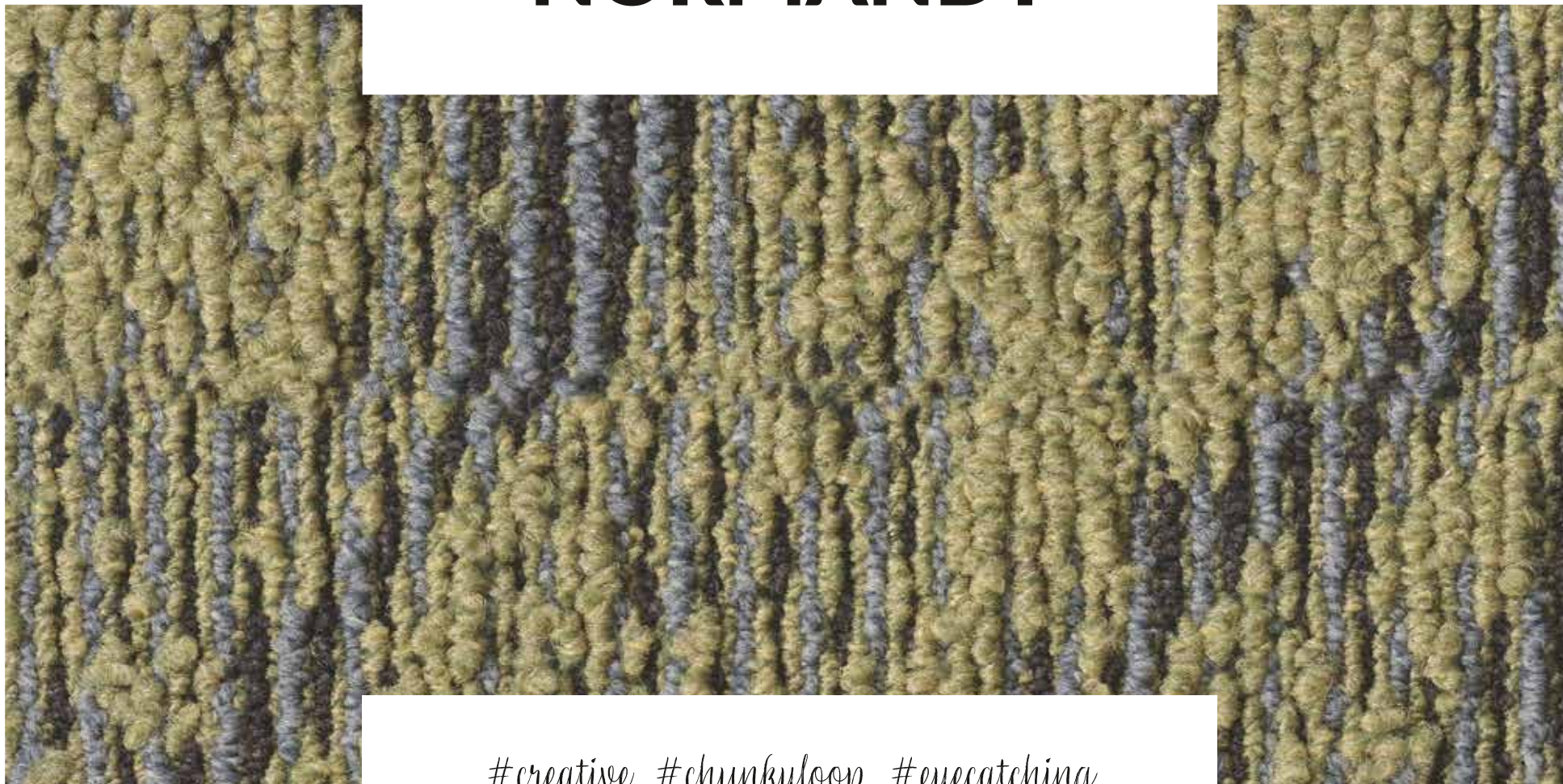
ÉMISSIONS DANS L'AIR INTÉRIEUR

A+
 A+ A B C

TÜV PROFI
 TÜV SÜD

tested for emissions,
 harmful substances

NORMANDY



100

#creative #chunkyloop #eyecatching

STYLE

STRUCTURED LOOP PILE

COMPOSITION

100% PA – SDN

PILE WEIGHT

850 G/M²

TOTAL THICKNESS

8,5 MM

RATINGS

CL 33 / BFL-S1



NORMANDY
595_90 & 75



595_38



595_49



595_55



595_60



595_63



595_70

102



595_75



595_76



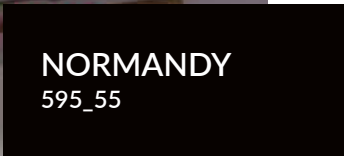
595_83



595_90

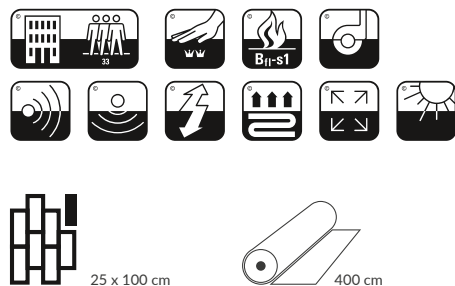


595_96



EN 14041
CE
18
DOP 000595B-001

EN1307
For use as textile
floorcovering in buildings.



OAK

ECONYL®
ENDLESS POSSIBILITIES



#inspiration #organic #sustainability

STYLE

STRUCTURED LOOP PILE

COMPOSITION

100% PA - ECONYL® - SDN

PILE WEIGHT

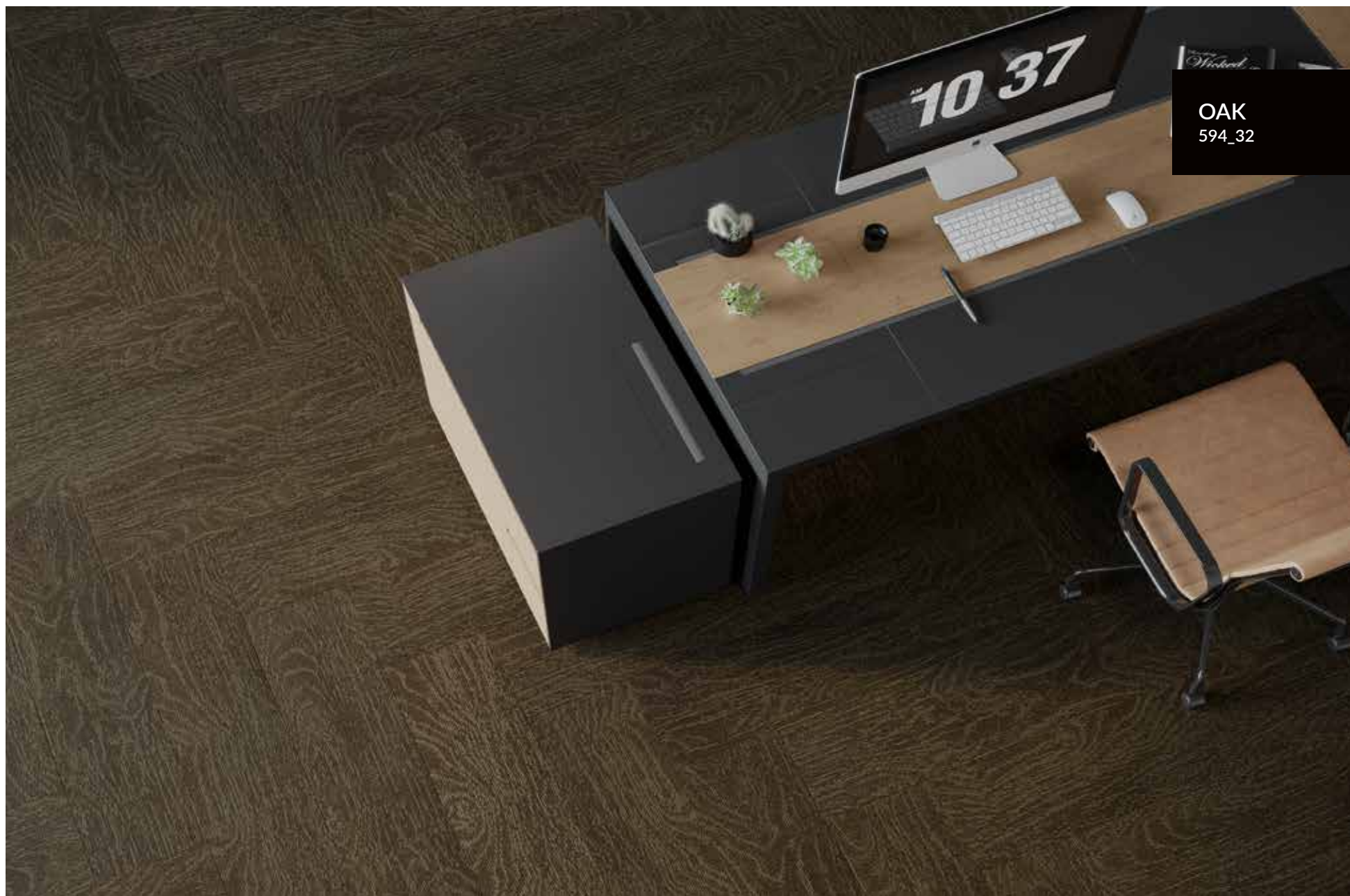
800 G/M²

TOTAL THICKNESS

8,0 MM

RATINGS

CL 33 / BFL-S1



OAK
594_32



594_10



594_11



594_20



594_23



594_25



594_32



594_34



594_40



594_41



594_42



594_50



OAK
594_40

EN 14041
CE
20
DOP 000594T-001
EN1307
For use as textile
floorcovering in buildings.

25 x 100 cm



ECONYL®
ENDLESS POSSIBILITIES

SDN
solution dyed nylon
Washable, stain resistant

ÉMISSIONS DANS L'AIR INTÉRIEUR

A+

A+ A B C

TÜV PROFI

72 74 5432 2

Tested for emissions, harmful substances

PRESIDENT E



#performance #comfort #elegance

STYLE
FRISÉ CUT PILE

COMPOSITION
100% PA - ECONYL® - SDN

PILE WEIGHT
1.300 G/M²

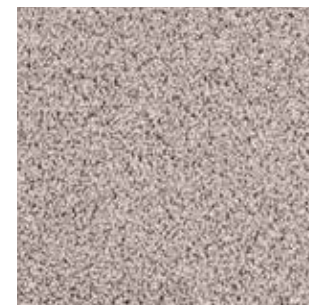
TOTAL THICKNESS
8,0 MM

RATINGS
CL 33 / BFL-S1



PRESIDENT E
533_61

PRESIDENT E
533_45



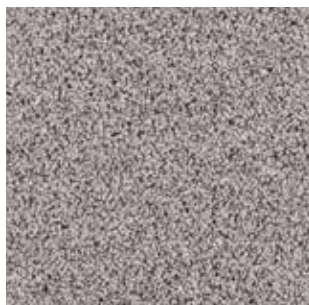
533_10



533_48



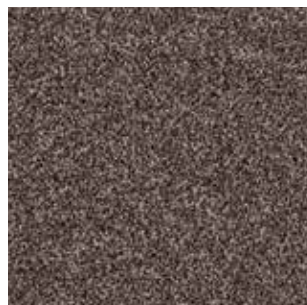
533_83



533_21



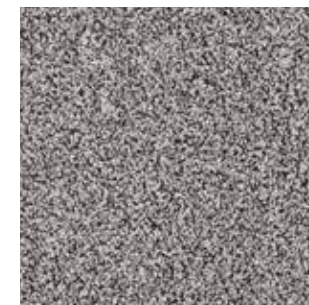
533_22



533_32



533_45



533_46



533_50



533_51



533_60



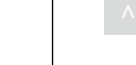
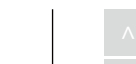
533_61



533_63

EN 14041
CE
 16
 DOP 000533T-001

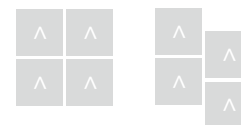
EN1307
 For use as textile
 floorcovering in buildings.



50x50 cm



400 cm



ECONYL®
 ENDLESS POSSIBILITIES

SDN
 solution dyed nylon
 without endurable latex



QUARTZ



#colourful #fashionstyle #zoning

STYLE
LOOP PILE

COMPOSITION
100% PA

PILE WEIGHT
550 G/M²

TOTAL THICKNESS
6,0 MM

RATINGS
CL 33 / BFL-S1



QUARTZ
610_49 & 80



610_37



610_38



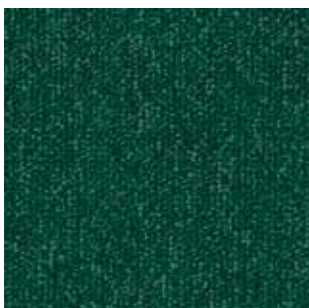
610_39



610_49



610_63



610_73



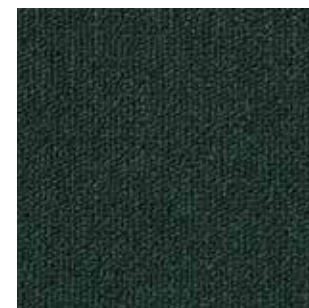
610_74



610_75



610_77



610_78



610_85



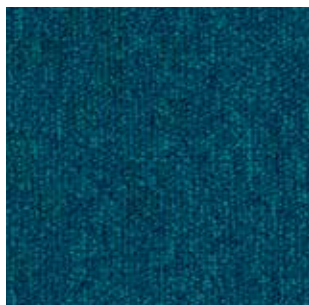
610_86



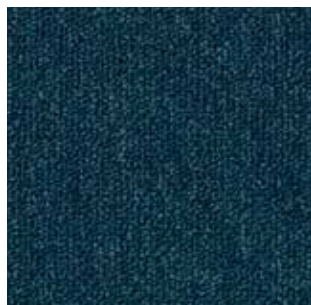
610_87



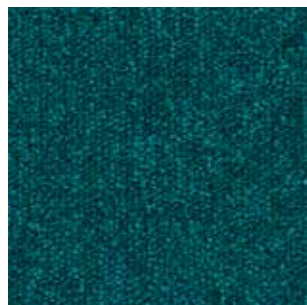
610_90



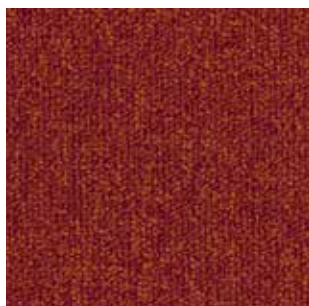
610_65



610_66



610_67



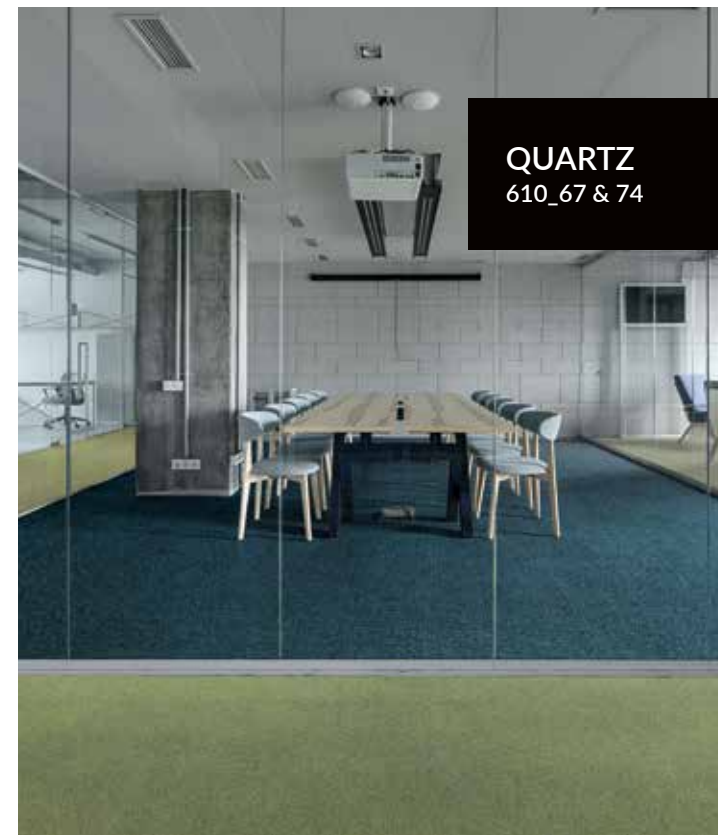
610_80



610_81

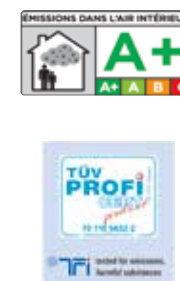
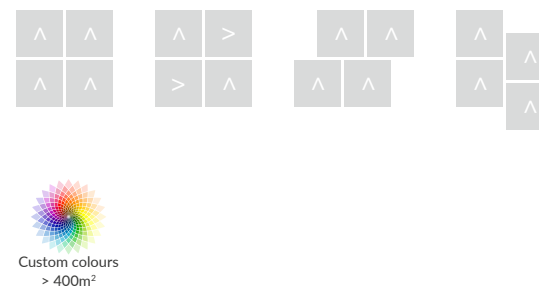
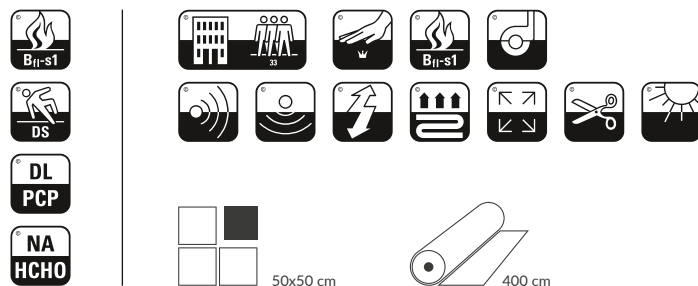


610_84



QUARTZ
610_67 & 74

EN 14041
CE
19
DOP 000423T-001
EN1307
For use as textile
floorcovering in buildings.



SHADES



#transition #patterns #contemporary

STYLE
LOOP PILE

COMPOSITION
100% PA - SDN

PILE WEIGHT
600 G/M²

TOTAL THICKNESS
6,8 MM

RATINGS
CL 33 / BFL-S1



SHADES
482_70 & 76



—
482_20



—
482_24



—
482_30



—
482_32



—
482_33

—
118



—
482_62



—
482_70



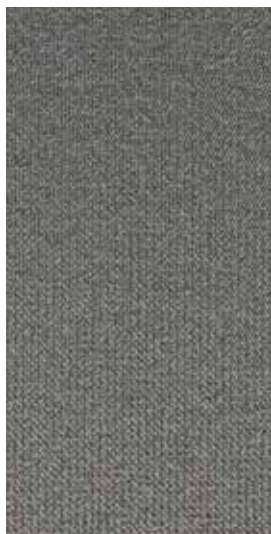
—
482_76



—
482_80



—
482_84



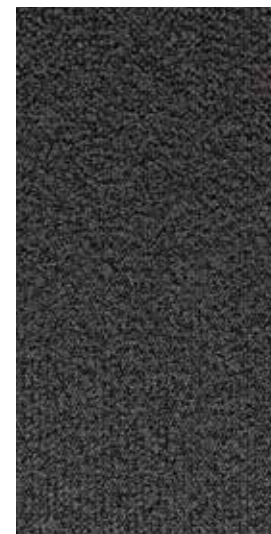
482_40



482_42



482_50



482_51



482_60

EN 14041
CE
 16
 DOP 000482-003

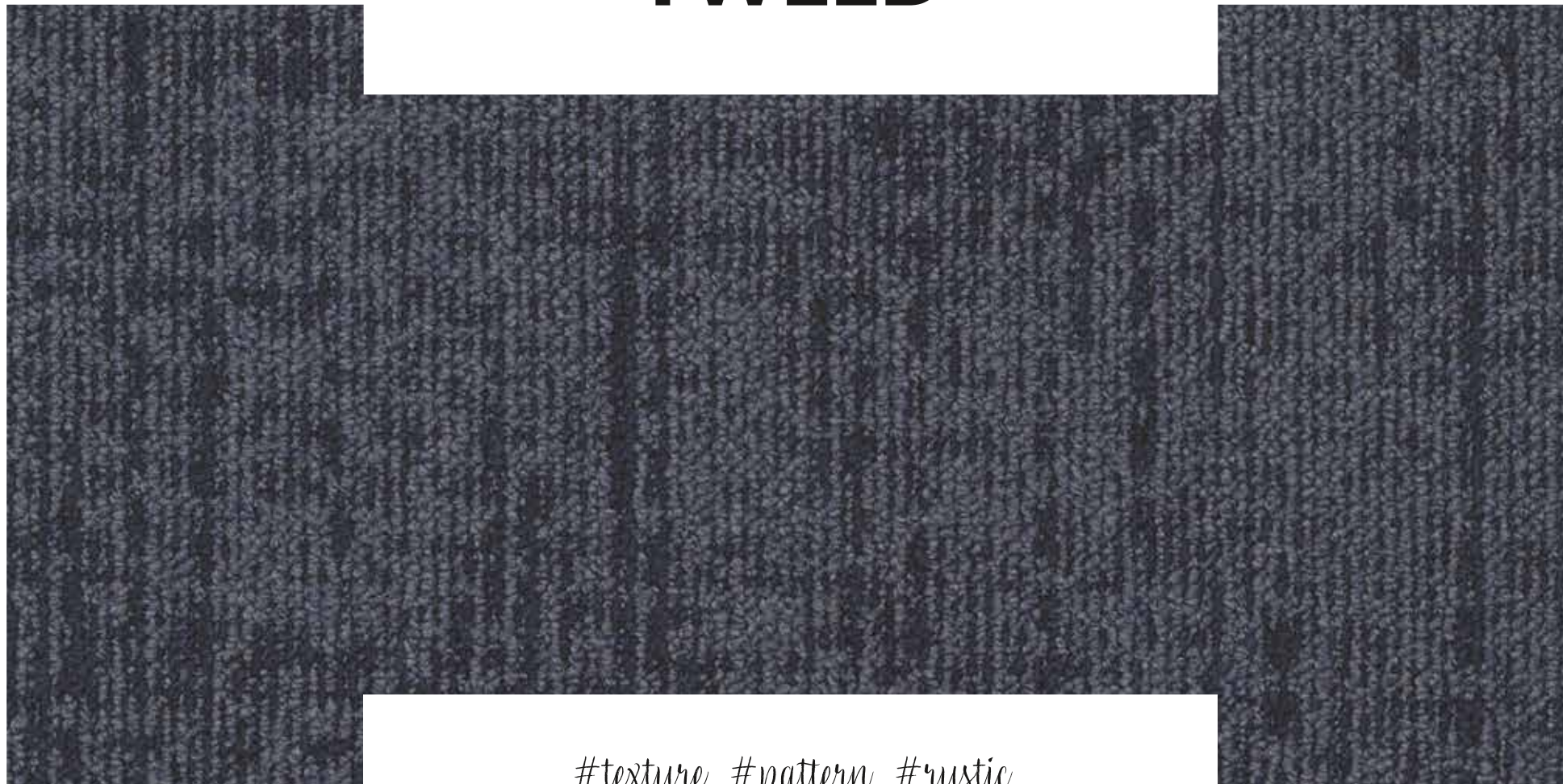
EN1307
 For use as textile
 floorcovering in buildings.



50 x 100 cm



TWEED



120

#texture #pattern #rustic

STYLE

STRUCTURED LOOP PILE

COMPOSITION

100% PA - SDN

PILE WEIGHT

700 G/M²

TOTAL THICKNESS

7,4 MM

RATINGS

CL 33 / BFL-S1



TWEED
613_61

TWEED
613_51

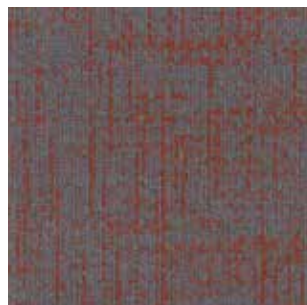




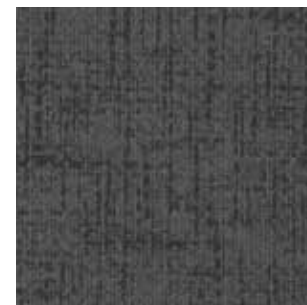
613_24



613_32



613_38



613_51



613_55



613_60



613_61

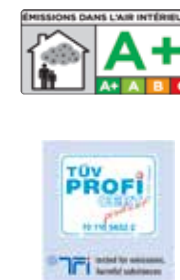
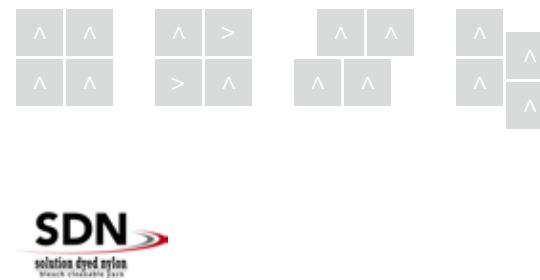
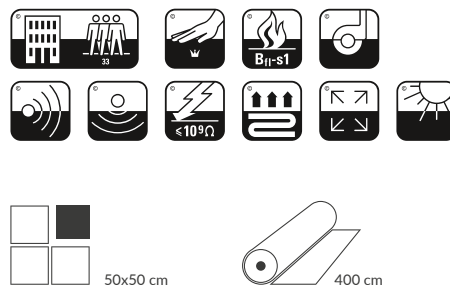


613_62



613_76

EN 14041
CE
 19
 DOP 000613T-001
 EN1307
 For use as textile
 floorcovering in buildings.



VINTAGE collection



#artisticprints #dynamicdesign #sustainability

STYLE

STRUCTURED LOOP PILE

COMPOSITION

100% PA – CHROMOJET PRINT

PILE WEIGHT

900 G/M²

TOTAL THICKNESS

7,0 MM

RATINGS

CL 33 / BFL-S1

FELINA
598_20



FELINA COLLECTION



598_20



598_40



598_42



598_71



598_84



598_99

FIRENZE
600_42

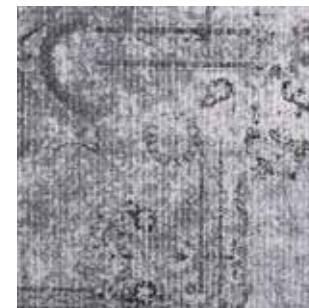
FIRENZE COLLECTION



600_20



600_40



600_42



600_60



600_83



600_84

FERRARA

599_60



FERRARA COLLECTION



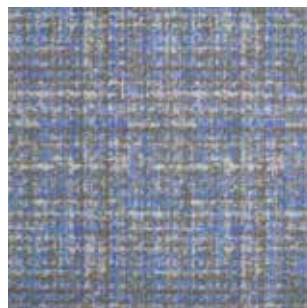
599_11



599_41



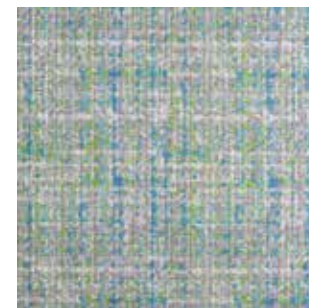
599_60



599_62



599_70

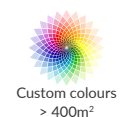


599_76

127

EN 14041
CE
17
DOP 600599598B-001

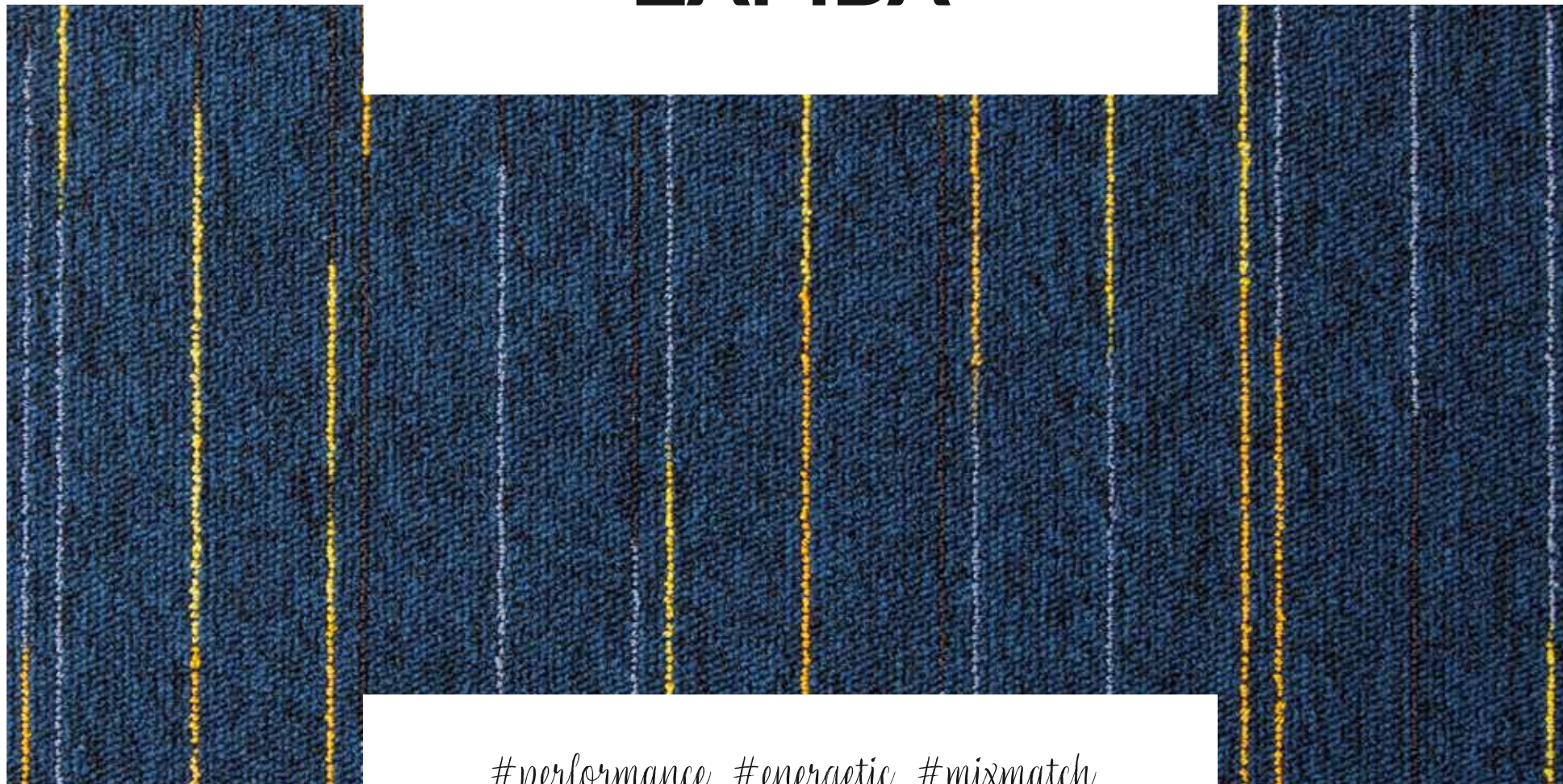
EN1307
For use as textile
floorcovering in buildings.



ECONYL®
ENDLESS POSSIBILITIES



ZAMBA



#performance #energetic #mixmatch

STYLE
LOOP PILE

COMPOSITION
100% PA - SDN

PILE WEIGHT
550 G/M²

TOTAL THICKNESS
6,0 MM

RATINGS
CL 33 / BFL-S1



ZAMBA
525_60



525_22



525_31



525_40



525_51



525_60



525_61

EN 14041
CE
 16
 DOP 000525B-002

EN1307
 For use as textile
 floorcovering in buildings.



50x50 cm



www.incati.be - sales@incati.be

Created by Tapibel NV
Industrielaan 4 - Nolimpark 1319, B-3900 Pelt - Belgium
Tel : +32 11 80 48 50 | Fax: +32 11 64 75 46

INCATI
Innovative Carpet Tiles